

NOTES:

- Approximated dimensions
- Do not scale off this drawing
- All dimensions are in millimeters unless good faith and believed to be correct
- If in doubt please review measurements on site

- Selecon Pacific 23/50 650w
- Source4 Jr 25' 60"
- Zoomspot 500w Profile
- Source4 750w Fresnel
- Par 64 Medium Lamp
- Source4 750w Fresnel
- Beamz BT F200C2 Fresnel RGBAW
- 1k Fresnel
- Simple LED RGBAW+UV
- 1k Ope units RGB
- LED Pak (House Lights)
- Epson EB-G7905UL 7000 ANSI Lumen
- Quest HPI 110 FWH
- Channel/Circuit

REV#	DESCRIPTION:	BY:	DATE:
STATUS: FOR INFORMATION			
FOR INFORMATION			

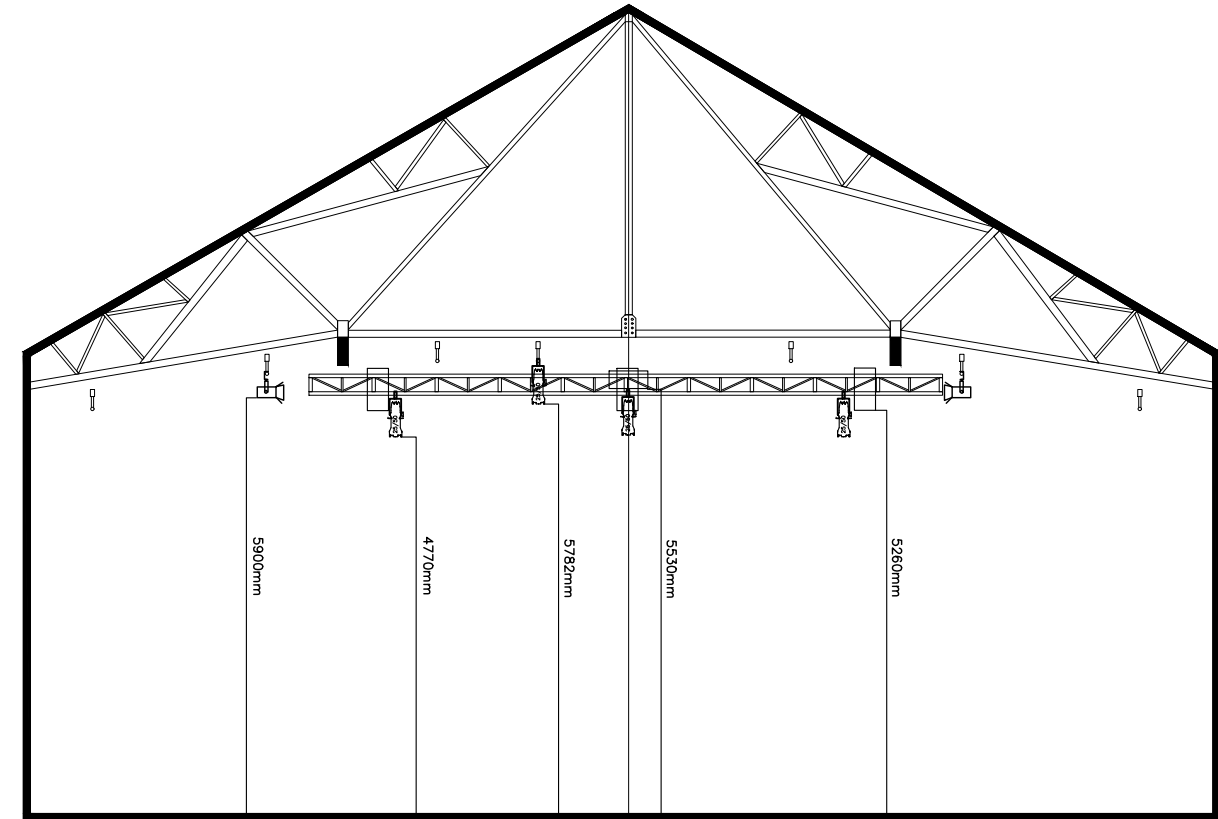
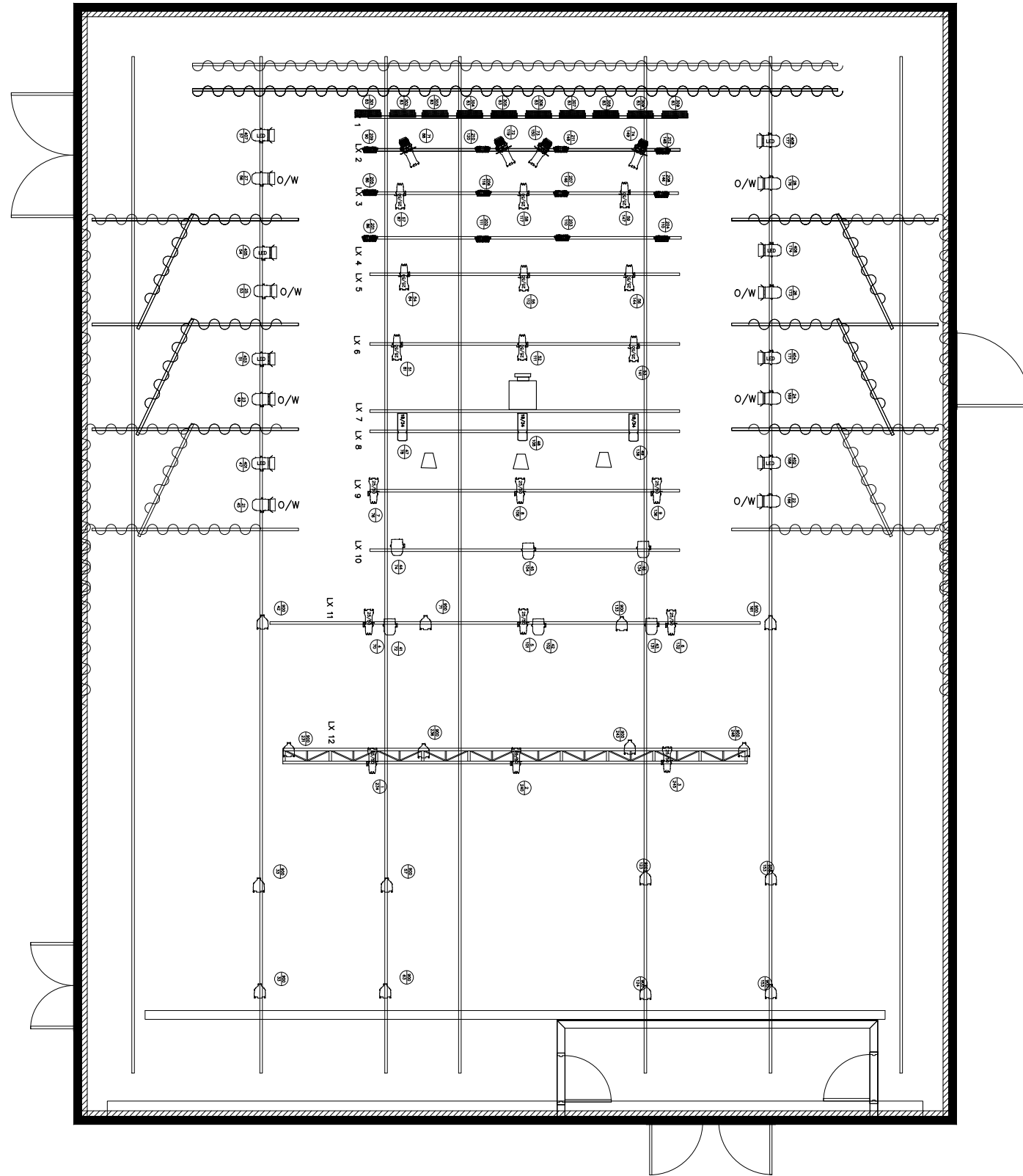
**GASWORKS ARTS PARK**

21 Gatham St  
 Albert Park 3206  
 03 8500 4207  
 www.gasworks.org.au

**GASWORKS THEATRE**

**TITLE:** LIGHTING STANDARD PLAN

SCALE AT AS NOT TO SCALE	DATE: 12/2/2024	DRAWN: E. Ingles	CHECKED:
PROJECT NO: 5203	DRAWING NO:	REVISION: 5	



- Selecon Pacific 23/50 650wl
- Source4 Jrn 25-50 Zoomspot 500w Profile
- Source4 750w Fresnel
- PAR 64 Medium Lampl
- Source4 750w Fresnel
- Beamz BT F200C2 Fresnel RGBAW
- 1k Fresnel
- Slimpar LED RGBAW+UV
- 1k Cyc units RGB
- LED PAR (House Lights)
- Epson EB-G7905UNL 7000 ANSI Lumen
- Quest HPI 110 FOHI
- Channel/ Circuit

NOTES

- Approximated dimensions
- Do not scale off this drawing
- All dimensions are given in good faith and believed to be correct
- If in doubt please review measurements on site

REV. DESCRIPTION:	BY: DATE:
STATUS: FOR INFORMATION	

**GASWORKS ARTS PARK**

21 Graham St  
Albert Park 3206  
03 8606 4209  
www.Gasworks.org.au

VENUE: GASWORKS THEATRE

TITLE:

SCALE AT AS: NOT TO SCALE	DATE: 12/2/2024	DRAWN: E. Ingles	CHECKED:
PROJECT NO: 2303	DRAWING NO:	REVISION:	C