

Gasworks Studio

TECHNICAL SPECIFICATIONS

1- Auditorium

Studio Capacity

The Gasworks Studio is a performance space with a flat floor and a raked seating system comprised of rostra platforms. The venue is particularly suited to productions where intimate contact between the audience and the performers is required. The Studio is wheelchair accessible and fully air-conditioned.

The seating bank can accommodate 52 patrons in our standard configuration, with 2 rows of 12 seats set at stage level or 64 with an additional row of 12 seats. By special request, the seating position or design can be adjusted. However, this may require additional labour/cost and must be reset to the standard configuration (End on) at bump out.

If you require seats to be held for follow spots, additional sound, AV or lighting equipment or for filming video, this will reduce the number of seats available.

2- Stage Details

Dimensions

Width, wall-to-wall 8.40m
Length, wall-to-wall 11.10m
Height to grid 4.40m

Stage Floor

27mm thick F17 Structural Plywood flooring, overlaid with tempered masonite. Painted Scenic Studios Stage Black. Please consult with Gasworks technical staff before using fixings (screws or nails) to the floor

Stage Access/Egress

- Onstage OP Stage/Dock door
Sound lock (North Wall) 1.80m (w) x 2.70m (h) Leaf and a half door opening outward
- Main Entrance/Loading Dock access Sound Lock (West side) 2.30m (w) x 2.70m (h)
Double doors opening outward
- Dimmer Room door (South side) 0.89m (w) x 2.10m (h) Single doors opening outward

Dressing Room

Four dressing rooms (typically two dressing rooms allocated to each show when both Theatre and Studio are in simultaneous use). Each room can accommodate up to 8 people comfortably and is fitted with benches, mirrors, mirror lights, heating/cooling and paging (paging runs to ALL dressing rooms. Cannot be separated).

There are a total of 7 unisex toilets (5 conventional, 1 ambulatory, 1 wheelchair accessible and of 4 unisex showers (traditional, 1 ambulatory/wheelchair accessible). There are laundry facilities available on request with an iron and ironing board.

There is a basic kitchenette with hot, cold and boiling water. Some cups and crockery are available but have yet to be guaranteed. Tea/coffee/milk etc., must be supplied by the show(s). This Kitchenette is a shared space between shows and Gasworks Admin, so all dishes must be cleaned, dried and put away as used. Should the kitchenette remain unclean, a cleaning fee will be on-costed to the show(s).

Foyer

The foyer has a small PA system capable of making announcements, playing CDs or connecting to a portable music device. Access to playback equipment is only available when Gasworks staff are rostered. The foyer is also a gallery space for our Visual Arts exhibitions program.

Testing & Tagging

All portable electrical equipment provided by the venue is tested and tagged according to AS/NZS3760 Australian Standard

Any portable electrical equipment brought into the venue must be tested and tagged to this Australian Standard. Testing of a small number of items may be done by the venue staff by prior arrangement and at a cost to the hirers.

3- Sound Reinforcement

House System

The Gasworks Theatre is equipped with a basic audio system sufficient for production playback and limited sound reinforcement applications.

System Control

Console Allen & Heath QU16 Digital Console

- 18 inputs [16 Mic/Line (XLR/TRS), 2 stereo TRS]
- 16 outputs [Main L/R (XLR), 10 Mix (4 mono XLR, 3 stereo XLR), 1 2TRK out (TRS), 1 ALT out (TRS)] Onboard Effects and EQ
- Patching 2 x XLR shared input/output in-house patching in DSOP, USOP, USP corners
- 4 XLR shared input/output in-house patching in DSOP corner
- Additional looms available on request (subject to availability)

Speakers/Amplifiers

Speakers

- 2 x Australian Monitor 150w
Passive, 10" LF, 1" HF drivers
Flown (inverted w/HF drivers at bottom)

Amplifiers

- Quest 500w amp
Running Speakon cables up to flown PA

Processing/Effects

Console Allen & Heath QU16 Digital Console

- Onboard processing: Gate, HPF,
- PEQ (across all inputs and outputs),
- GEQ (across all outputs), compression
- Onboard effects: Reverb, Delay, ADT (Auto Double Tracking), Chorus, Symphonic Chorus, Flanger, Phaser, Gated Verb

Graphic EQ

- DBX 231S EQ
Dual Channel 31 Band Graphic EQ

Playback

Digital

- Mac Mini Running Qlab 4 Full License (1 x Stereo playback. AV feed can be supplied if needed for bump-in)

Compact Disk

- (on request) Denon CD635 dual CD Player (subject to availability)

Microphones & Dis

(All items listed below are shared between all gasworks venues. Items may be booked during your production meeting, or by telephone or email prior to your event)

Vocal

- 2 x Shure Beta 58
- 1 x Shure Beta 57
- 4 x Shure SM 58
- 1 x Shure SM 57
- 2 x Sennheiser ew100 G3 Handheld Radio Mics (566 MHz – 608 MHz)

- 1 x Sennheiser ew100 G3 Headset RF Mic (17850 MHz – 1800 MHz)
- 4 x Sennheiser Lapel Mic

Please note it is illegal to broadcast within the 610 MHz – 652 MHz range

DI's

- 3 x Active Dual Behringer

Other

- Multicore 16/4 analogue multicore (subject to availability)
- Microphone Stands 3 x Boom Stand
- 2 x Heavy-based upright stand
- Microphone Leads - Assorted

4- Lighting Equipment

Lighting Grid

The Gasworks Studio lighting grid consists of 4 x Cross-stage 8m lengths of 400mm Box Truss (black powder coated), set on trolleys on a set of rails that run laterally down the sides of the room.

Subject to approval, these bars can travel US and DS in the room (requires discussion and approval from the Operations Manager and/or Technical Manager and may incur additional costs). One bar is set behind the existing heritage girder trolley (from which the Legs are suspended), and therefore has limited movement. The bars must be returned to standard positions on bump-out.

Each Cross-stage Box Truss has 12 load circuits at roughly 500mm centres (circuits are looms run along the truss with staggered lead lengths). There are 24 floor circuits in the Studio located in the DSOP, DSP, USOP and USP corners of the room.

There is additional 3Phase power available for portable dimmer racks if required, located ONSTAGE on the MSP side of the room (will be clearly visible and sits in the performance area). There are more 3Phase outlets within the Dimmer Room (see 4.4 Additional Power).

The total of each lighting truss has an SWL of 300kg Distributed Load with a Point Load of 25kg per meter.

Lighting Control

Control Console

- ETC Element Console.
Please confirm the software update and fixture library at the production meeting or via email.
There is no control room in the facility. The control desk position is the rear P-Side corner of the seating bank.

Dimmers and Patching

Dimmers

- 1 x LSC ePAK 12 channel (60 channels x 2.4KVA)
- 1 x LSC GenVI 12 channel (12 channels x 2.4KVA)

The Patch bay and dimmers are located in a plant room adjacent to the dressing room. GenVI rack can be set to TruePower, creating either an Auto-on non-dimmed outlet or a DMX controllable non-dimmed outlet. Please talk with technical staff if you require this.

Load Circuits (Sub patches)

- Floor Circuits 24 (1 – 24)
- LX 1 (Seating Bank) 12 (25 – 36)
- LX 2 (DS) 17 (249-266)
- Heritage Girder Trolley 12 (37 – 48) 12 (49 - 60) (subject to availability)
- LX 3 (US) 12 (61 - 72)

Additional Power

- Dimmer room 2 x Wilco 5 pin 30 amp 3 phase (subject to availability)
- Stage floor (Onstage MSP) 1 x Wilco 5 pin 30 amp 3 phase

Lanterns

Profile

- 4 x Selecon Acclaim Profile 24/44 650w
- 2 x Prolite Profile 25/45 1K w/Decals
- 4 x Prolite Profile 25/45 1K (subject to availability)

Fresnel

- 6 x Strand Cantata Fresnel 1K w/barndoors
- 2 x Prolite Fresnel 1k

LED

- 4 x Tourpro Slimpar RGBAW+UV with 60 deg lenses
- 4 x Chauvet DJ EVE P-130 RGB Wash

Stands

- 4 x Steel, side boom bases (Subject to availability)
- 4 x Timber H-stands
- 4 x Steel barrel H-stands
- 12 x 90degree boom arms (varying lengths)
- Short scaff pipes and 90degree scaff clamps (subject to availability)

All lanterns are equipped with hook clamps, bolt sets, safety cables and colour frames.

Unless noted, fresnels are equipped with barndoors.

Gobo holders are available for 2 Selecon Acclaim profiles

Gobo holders are available for 2 Prolite profiles

Any adjustments to Standard Lighting Plan need to be reset at bump-out.

Additional lighting stock may be available at an additional cost

House/Work Lights

- 4 x 150w QI flood lights, running through one dimmer and operated from lighting console.
- A motorized skylight shutter can be opened for additional daylight
- Fluorescent work lights powered from the OP side of the rear row in the seating bank. Must be left on when Theatrical lighting is not in use.

5- Rigging & Staging

Rigging Equipment

There is an assortment of rigging gear including, slings, shackles, scaff clamps, scaff pipe, etc. available. Any rigging must be discussed prior to bump-in, and a qualified rigger employed to carry out the work where necessary.

All rigging in the venue must be installed and signed off by a licensed rigger.

All rigging must be coordinated through and approved by Gasworks Technical Manager.

Stage Cloths

Drapes (black wool) 5.50m high x 2.50m long

These leg drapes are used to create wings/legs and also the rear crossover. Drapes are in standard positions. Any adjustments to drapes from standard positions must be reset back to standard positions at bump-out.

6- Audio Visual Equipment

Gasworks can provide the following audio-visual equipment at an additional cost to the hirer:

Projector

Sanyo PLC-XM150 6000 ANSI lumen Projector

Media Players

Sony DVP-NS50P DVD Player LG DZ111 DVD Player

Mac Mini running Qlab 4 (see 3.5 Playback for more details. This is included in hire and is not at additional cost)

All items listed below are shared between all Gasworks venues and must be booked prior to your event to ensure availability.

Screens

Flat portable tie-up screen. 3M x 1.8M.
(Ties onto a bar. Has a pocket for a water pipe or batten pipe in the bottom. A small additional cost applies for this screen)

Lectern

1 x free-standing gold & black lectern

Additional AV equipment may be sub-hired through Gasworks suppliers

7- Working at Heights

EWP (Elevated Work Platform)

The theatre provides 2 x JLG elevated work platforms. The 20MVL model has a 5.9m platform height, and point-and-go steering.

It is the policy at Gasworks that operators of this EWP must either have an EWP operator's ticket or be supervised by someone who does.

Ladders

- Aluminium 'A' frame ladder (2.1m)
- Fibreglass 1.6M ladder

All ladder work over a height of 2m must be done with an approved harness as per Occupational Health & Safety Act 2004.

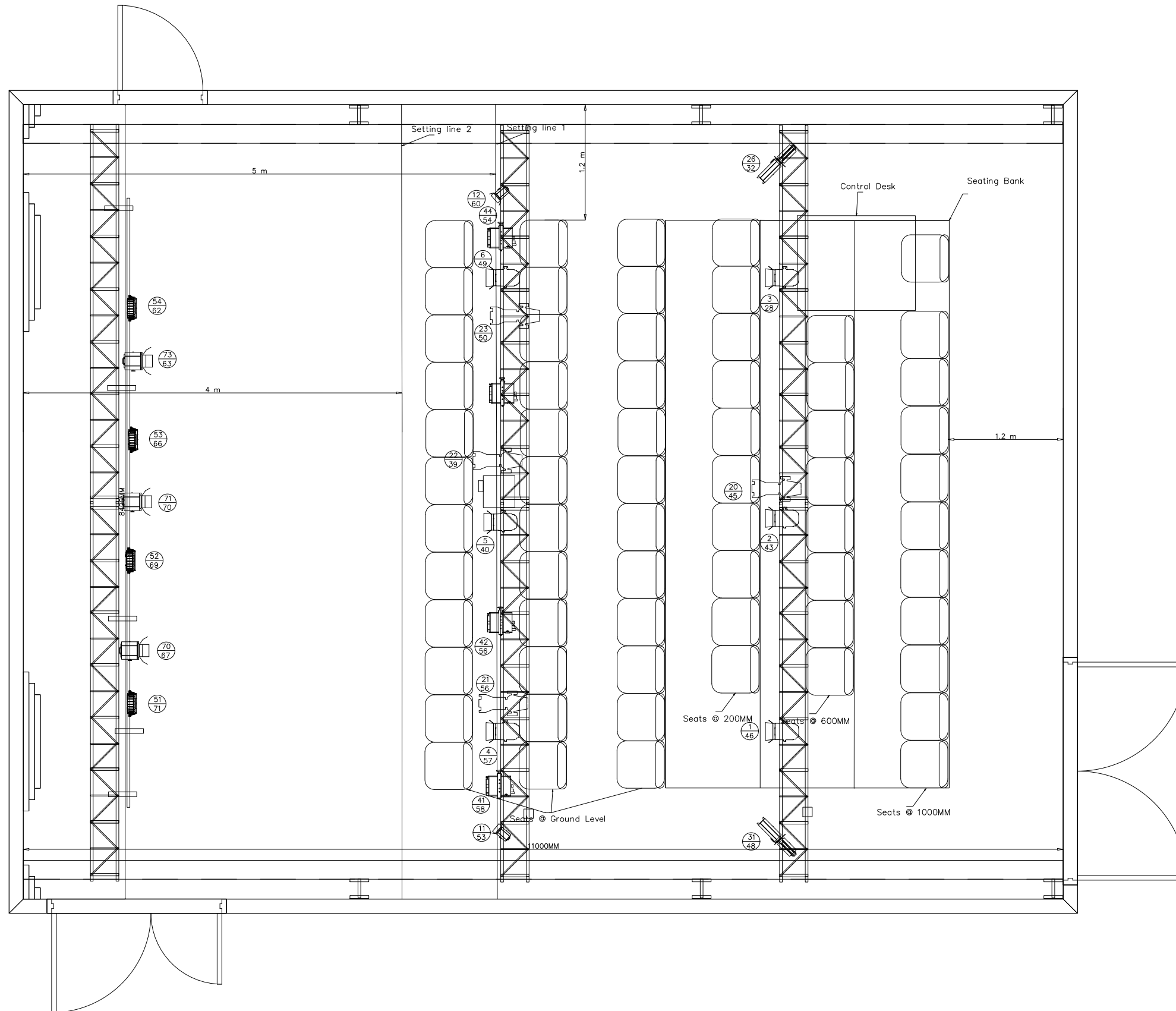
8- Contact Information

Gasworks Arts Park
21 Graham St, Albert Park 3206
Admin 8606 4200
Fax 9699 9890
Website www.gasworks.org.au

Operations Manager – Eduard
Ingles 8606 4200
eduard@gasworks.org.au

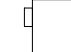



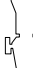


Head Technician – Jacob Shears
8606 4214
technical@gasworks.org.au

Loading Dock/Backstage
86064212



Notes:

1. WORK TO FIGURED DIMENSIONS ONLY.
2. THIS DRAWING IS TO BE READ IN CONJUNCTION WITH ALL RELEVANT ARCHITECTS, SERVICE ENGINEERS DRAWINGS AND SPECIFICATIONS.

-  Sanyo PLC-XM150
6000 ANSI lumen
Projector
-  Prolite Fresnel 1k
-  Prolite Profile 25/45 1K
-  Strand Cantata
Fresnel 1K
w/barndoors
-  Selecon Acclaim
Profile 24/44 650w
-  Tourpro Slimpar
RGBAW+UV with
60 deg lenses
-  Chauvet DJ EVE P-130
Wash

CHANNEL
DIMMER/ADDRESS

REV:	DESCRIPTION:	BY:	DATE:
------	--------------	-----	-------

STATUS:

FOR INFORMATION



GASWORKS ARTS PARK

21 Graham St
Albert Park 3206
03 8606 4209
www.Gasworks.org.au

VENUE: STUDIO THEATRE

TITLE: VENUE PLAN

SCALE AT A3: 1:50, 1:100	DATE: 4/7/2024	DRAWN: Eduard I	CHECKED: Eduard I
PROJECT NO: 2301	DRAWING NO: A3/03	REVISION: A	

Standard Patch Sheet

Studio Theatre



Conventional Fixtures					
Dimmer	Patch	Channel	Lamp	Focus	Gel /Gobo
1	46	1	Source 4 Fresnel	DS OP Front Wash	Open White
3	43	2	Source 4 Fresnel	DS C Front Wash	Open White
4	28	3	Source 4 Fresnel	DS P Front Wash	Open White
5	57	4	Source 4 Fresnel	US OP Front Wash	Open White
6	40	5	Source 4 Fresnel	US C Front Wash	Open White
7	49	6	Source 4 Fresnel	US P Front Wash	Open White
11	53	11	Prolite Fresnel 1k	OP Cross Wash	Open White
12	60	12	Prolite Fresnel 1k	P Cross Wash	Open White
13	45	20	Source 4 Jr 24/44	DS OP Spot	Open White
14	56	21	Source 4 Jr 24/45	DS C Spot	Open White
15	39	22	Source 4 Jr 24/46	DS P Spot	Open White
16	50	23	Source 4 Jr 24/47	US C Spot	Open White
18	48	31	Prolite Profile 25deg 1k	Decal Wash	Med Break-up
19	26	32	Prolite Profile 25deg 1k	Decal Wash	Med Break-up
8	67	70	Cantana Fresnel	Back Wash	TBC
9	70	71	Cantana Fresnel	Back Wash	TBC
10	63	72	Cantana Fresnel	Back Wash	TBC
24		99	4 x 150 Floods	House Lx	Open White

LED Fixtures					
Dimmer	Address	Channel	Lamp	Focus	Gel /Gobo
GPO	31-33	41	Showline LED Parcan	LED Face wash	RGBI
GPO	36-38	42	Showline LED Parcan	LED Face wash	RGBI
GPO	41-43	43	Showline LED Parcan	LED Face wash	RGBI
GPO	46-48	44	Showline LED Parcan	LED Face wash	RGBI
GPO	51-53	51	Showline LED Parcan	Back Wash LED	RGBI
GPO	56-58	52	Showline LED Parcan	Back Wash LED	RGBI
GPO	81-83	53	Showline LED Parcan	Back Wash LED	RGBI
GPO	86-88	54	Showline LED Parcan	Back Wash LED	RGBI