



GASWORKS ARTS PARK  
**GARDEN STUDIO**  
  
A QR code and some small text are visible at the bottom of the poster.

**Garden Studio**  
Gasworks Arts Park

# GARDEN STUDIO



# THE ROOM

The Garden Studio at Gasworks Arts Park is a versatile venue ideal for classes, meetings, rehearsals, and small gatherings, accommodating up to 30 people comfortably.

It's popular for theatre rehearsals, auditions, exercise classes, and more, offering a scenic view of Gasworks Park.

Equipped with chairs, tables, heating, and nearby amenities including public toilets, it sits amidst a serene setting with gravel paths, gentle slopes, and grassy areas, enhancing its natural charm.





# VENUE COSTS

**The Garden Studio is available for hire from 7 am to 11 pm, seven days a week, not available public holidays. The rates for booking the space are as follows:**

- Hourly rate: \$35
- Full Day (8 hours): \$250 (including GST)
- Half Day (4 hours): \$130 (including GST)
- additional hours or half an hours charged at \$35
- Refundable room bond of \$100

Gasworks Members can enjoy discounted rates, so it is worth inquiring about membership options if applicable.







# FAQ

## **Can I decorate the space?**

You are welcome to decorate the space to suit your event, as long as all decorations are removed at the end of your hire, leaving the room in the same condition as you found it.

## **Do I have to pay for Set/Pack up time?**

Yes, your set up and pack up time need to include in your hire time.

## **How can I confirm my booking?**

Your booking will be confirmed after you have paid in full and returned a signed contract.

## **What if I want to cancel my booking?**

If you cancel with more than a weeks' notice, we will refund your money in full. If you cancel with less than a weeks' notice, Gasworks will retain half the hire fees.

**How do I gain access?** The Garden Studio is accessible by key code, no key needed. Once your booking is confirmed you will receive the access code.

**What is included in the room?** The Garden Studio features 5 trestle tables, 30 chairs, a gas heater, ceiling fans and a kitchen sink. The closet bathrooms are located next door, they are serviced by the City of Port Phillip.



# FAQS CONTINUED

## **Can I bring alcohol into these spaces?**

No, alcohol is not permitted in the space.

## **Can I use an external catering company?**

You are more than welcome to arrange catering with external vendors. Please note we do not have facilities for heating and cooling food.

## **What happens if I damage property within the space?**

You will be liable for any damage that occurs during your hire. The cost of the damage will be assessed, and Gasworks may retain some or all of your bond to recover the costs of the damaged property.

## **Do I need public liability insurance?**

Yes, if you are inviting general public or a large invitation list to an event held within the Garden Studio, as opposed to a private event with family and friends, you should arrange public liability insurance to the value of \$20,000.

## **Do I need to clean up at the end of my hire?**

Yes, each hirer must leave the space as they found it. This includes tables and chairs being packed up. All cleaning products can be found within the space. We suggest taking a photo of when you enter the space and when you leave.

## **What is banned from the space?**

Unfortunately, glitter, plastic confetti, balloons that are not weigh down, glass and sparkles are banned from the space.

## **How do I book a section of the Park exclusively to hold a private function, BBQ, Jumping Castle or Petting Zoo?**

Gasworks Arts Park only take bookings for any of our internal spaces. If you require an exclusive space within the park, you will need to contact the City of Port Phillip on 9209 6777 to arrange a permit.

## **How much noise can we make in the space?**

Please be respectful to our neighbours after hours and keep noise to a minimum. Please follow EPA guidelines for residential noise laws.

## **How accessible is the Garden Studio?**

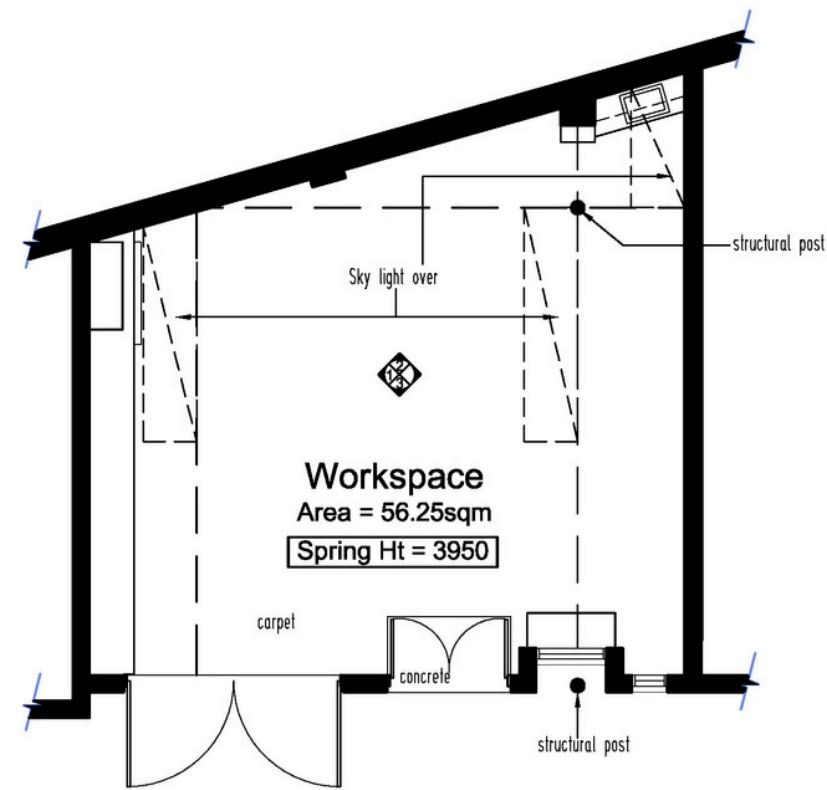
The closet parking for the Garden Studio is either Graham or Pickle Street. This is all day free parking. The pathways around the room are bluestone and can be uneven gravel and grass. The doors are double bayed and accessible with a wheelchair.

We value feedback from our visitors and are constantly striving to improve accessibility. Please feel free to contact [frontdesk@gasworks.org.au](mailto:frontdesk@gasworks.org.au) with your suggestions.

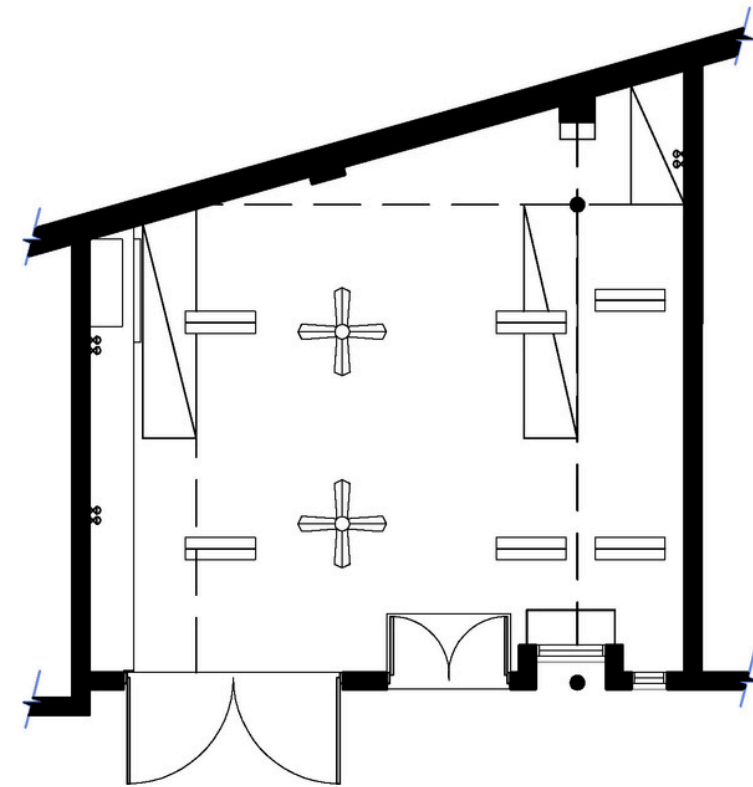
If you have any further inquiries or require additional information, you can contact the Administration Coordinator at [frontdesk@gasworks.org.au](mailto:frontdesk@gasworks.org.au). The Gasworks Arts Park team looks forward to hearing from you and hosting your event in this creative space.



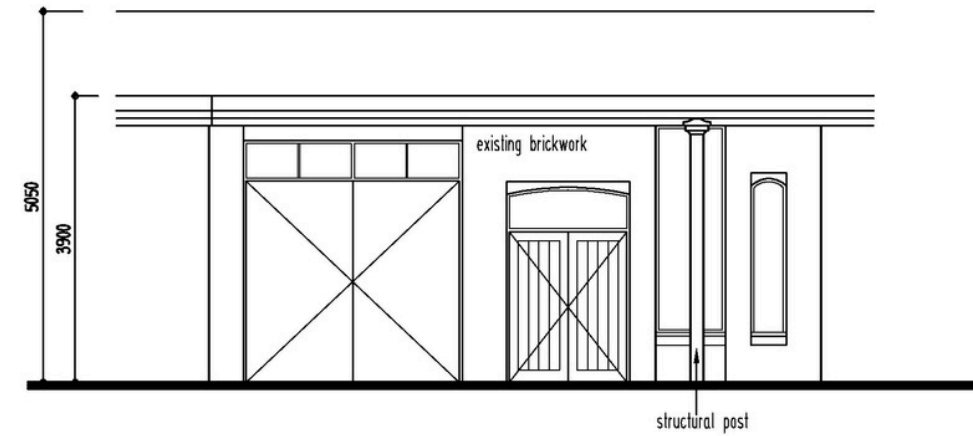
# TECH SPECS



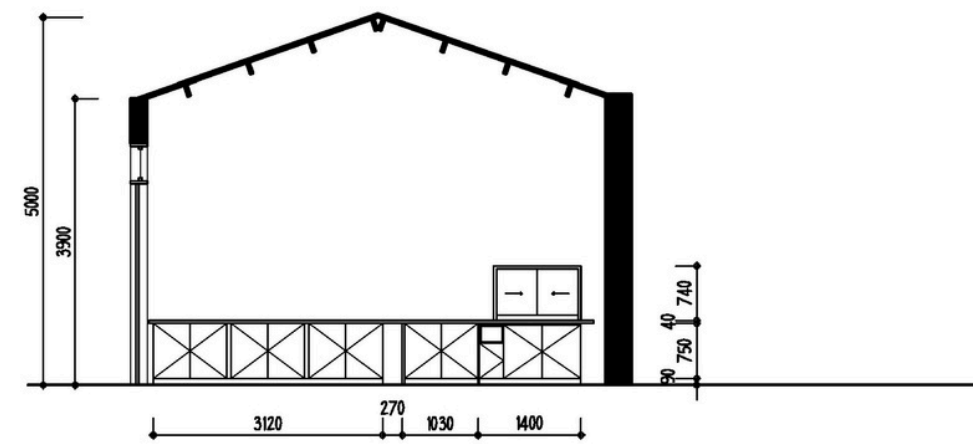
**BUILDING 4, (STUDIO 3)  
GROUND FLOOR PLAN**  
Scale 1:100



**BUILDING 4, (STUDIO 3)  
ELECTRICAL PLAN**  
Scale 1:100



**FRONT ELEVATION**  
Scale 1:100



**INTERNAL ELEVATION 1**



**INTERNAL ELEVATION 2**

**INTERNAL ELEVATION 3**

## ELECTRICAL LEGEND

- ⊙ Surface mounted incandescent
- ⊗ Double GPO.
- ⊗ Single GPO
- mh Manhole - roof access
- ⊕ Ceiling exhaust fan
- ▬ Switchboard, surface mounted
- ▬ Double 40W fluorescent



**PHOTO OF BUILDING 4**

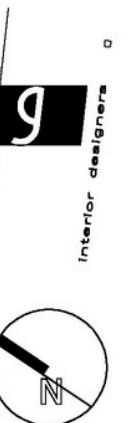
**EXISTING CONDITIONS**  
21 GRAHAM STREET (GASWORKS)  
ALBERT PARK

## **BUILDING 4, (STUDIO 3)**



CBG Architects Pty. Ltd.  
Studio 3 / 167 Fitzroy St.  
St. Kilda Vic 3182  
Telephone: 9525 3855  
Facsimile: 9525 4266

Date: FEB 2008  
Scale: 1 : 100 at A3  
Drawing No: 2804  
Sheet: 01  
Copyright ©



\* Any dimensions and areas shown are approximate only



# HOW TO BOOK



Contact the front desk directly by calling 03 8606 4200.



Send your inquiry via email  
[frontdesk@gasworks.org.au](mailto:frontdesk@gasworks.org.au)



Fill in an [EOI](#) now from our venue hire page

Gasworks will respond to all requests within 2 working days .