



GASWORKS THEATRE

GASWORKS THEATRE

Gasworks Theatre is a black box venue with a flat, sprung floor and raked seating, accommodating 158 for most shows. Cabaret-style seating fits 50 patrons around 10 tables, with a total capacity of 192. It can host up to 240 for events like conferences. The theatre is wheelchair accessible, air-conditioned, and equipped with extensive lighting and sound gear. Dressing rooms are available, with the Studio Theatre and Garden Studio for extra space or rehearsals. During major Melbourne festivals, Gasworks partners with hirers to produce festival seasons.





VENUE COST

Performing Arts Hire Rates:

Weekly (Sun to Sat) \$4,400 incl GST

Daily (Sun to Thurs) \$1,200 incl GST

Daily (Fri & Sat) \$2,000 incl GST

Please note, the above prices are for the venue hire only and do not include staffing costs or other additional costs. A Gasworks technician is required on-site for the duration for your hire in this theatre.

ADDITIONAL COSTS

We offer the following services upon request. For information on costs, please contact the venue coordinator.

- ▶▶ **PHOTOGRAPHY**
- ▶▶ **FILMING**
- ▶▶ **MARKETING**
- ▶▶ **DESIGN**







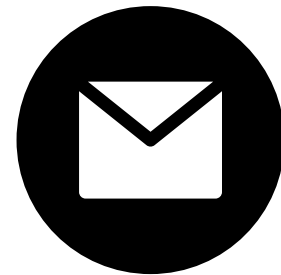
entertainment
theatre



HOW TO BOOK



(03) 8606 4200



**Send your inquiry via email to
venuecoordinator@gasworks.org.au**



Fill out the EOI form on our website.

Gasworks will respond to all requests within 5 working days . Please note this may be longer during Festival Seasons.

LET'S CREATE TOGETHER



frontdesk@gasworks.org.au



gasworks.org.au



[\(03\) 8606 4200](tel:(03)86064200)

TECHNICAL SPECIFICATIONS



Gasworks Theatre

TECHNICAL SPECIFICATIONS

Table of Contents

Auditorium.....	3
Theatre Capacity	3
Stage Details	3
Dimensions	3
Stage Floor	4
Stage Access/Egress	4
Dressing Room	4
Foyer	5
Sound System.....	5
House System.....	5
System Control.....	5
Speakers/Amplifiers.....	5
Processing/Effects	6
Playback	6
Microphones & DI's	6
Lighting Equipment	7
Lighting Grid.....	7
Lighting Control	8
Dimmers and Patching	8
Additional Power.....	8
Lanterns	9
House/Work Lights	10
Rigging & Staging.....	10
Rigging Equipment.....	10
Stage Cloths.....	10
Audio Visual Equipment.....	11



Projector	11
Media Players	11
Screens	11
Lectern	12
Working at Heights	12
EWP (Elevated Work Platform)	12
Ladders.....	12
Testing & Tagging	12
Contact Information	13

Auditorium

Theatre Capacity

The Gasworks theatre is a performance space with a flat floor and a raked, retractable seating system. The venue is particularly suited to productions where intimate contact between the audience and the performers is required. The theatre is wheelchair accessible and fully air-conditioned.

The retractable seating bank can be set at five different capacities at the start of your hire. Those capacities are:

- Full PAX – 12 rows, 244 seats total (242 sellable seats), including 1 row at stage level
 - $\frac{3}{4}$ PAX – 10 rows, 200 seats total (198 sellable seats), including 1 row at stage level
 - $\frac{1}{2}$ PAX – 8 rows, 160 seats total (158 sellable seats), including 1 row at stage level – This is the standard configuration for the seating bank & must be reset to this on bump-out
 - $\frac{1}{4}$ PAX – 5 rows, 100 seats total (98 sellable seats), including 1 row at stage level
 - 0 PAX - Empty Room – No fixed seating

By special request, we can fit up to 300 seats for events that require a minimal stage space, such as conferences. The number of rows on the floor alters the number of seats available for sale to patrons.

If you require seats to be held for follow-spots, additional sound, AV or lighting equipment or for filming video, this will reduce the number of seats available.

Stage Details

Dimensions

Width, wall-to-wall	16.20m
Length, wall-to-wall	21.00m
Stage Depth, rear wall to setting line, at Full PAX	7.00m
Stage Depth, rear wall to setting line, at $\frac{3}{4}$ PAX	7.50m
Stage Depth, rear wall to setting line, at $\frac{1}{2}$ PAX	9.00m
Stage Depth, rear wall to setting line, at $\frac{1}{4}$ PAX	12.45m
Stage Depth, rear wall to setting line, at 0 PAX	17.20m
Height to grid (lowest, outer 2 LX bars)	5.60m
Height to grid (mid., inner 2 LX bars)	6.10m
Height to grid (highest, middle 3 LX bars)	6.28m

Stage Floor

Stage area (7.4m from the rear wall to where Full PAX seating ends):
Tongue and groove (hoop pine) timber suspended on 12mm neoprene pads, overlaid with tempered masonite. Painted Scenic Studios Stage Black.

Under Seating Bank (11.6m from Foyer end wall to where Full PAX seating ends):
Structural, load-rated plyboard suspended on 12mm neoprene pads, overlaid with tempered masonite. Painted Scenic Studios, Stage Black.

Please consult with Gasworks technical staff before using fixings (screws or nails) to the floor or walls.

Stage Access/Egress

Loading dock/exit door (East side)
1.43m (w) x 2.45m (h) Single door opening outward to park. Access for up to 2m high vans.

Seating storage dock (West side)
2.35m (w) x 2.95m (h) Double doors opening outward

Dimmer Room door (South-West side)
1.6m (w) x 1.95m (h) Double doors opening outward

Foyer entry/exit door (South side)
2.4m (w) x 2.3m (h) 2 x Single doors opening outward into Sound Lock.

Double doors opening outward into Foyer

Dressing Room

Four dressing rooms (typically two dressing rooms allocated to each show when both Theatre and Studio are in simultaneous use). Each room can accommodate up to 8 people comfortably and is fitted with benches, mirrors, mirror lights, heating/cooling and paging (paging runs to ALL dressing rooms. Cannot be separated).

There are a total of 7 unisex toilets (5 conventional, 1 ambulatory, 1 wheelchair accessible and of 4 unisex showers (traditional, 1 ambulatory/wheelchair accessible). There are laundry facilities available on request with an iron and ironing board.

There is a basic kitchenette with hot, cold and boiling water. Some cups and crockery are available but have yet to be guaranteed. Tea/coffee/milk etc., must be supplied by the show(s). This Kitchenette is a shared space between shows and Gasworks

Admin, so all dishes must be cleaned, dried and put away as used. Should the kitchenette remain unclean, a cleaning fee will be on-costed to the show(s).

Foyer

The foyer has a small PA system capable of making announcements, playing CDs or connecting to a portable music device. Access to playback equipment is only available when Gasworks staff are rostered. The foyer is also a gallery space for our Visual Arts exhibitions program.

Sound System

House System

The Gasworks Theatre is equipped with a basic audio system sufficient for production playback and limited sound reinforcement applications.

System Control

Console Allen & Heath QU16 Digital Console

- 30 inputs [24 Mic/Line (XLR/TRS), 3 stereo TRS]
- 24 outputs [Main L/R (XLR), 10 Mix (4 mono XLR, 3 stereo XLR), 2 Groups (stereo XLR), 2 Matrix (stereo XLR), 1 2TRK out (TRS), 1 ALT out (TRS)] Onboard Effects and EQ

Patching Allen & Heath d Snake 16/8

- 16 XLR inputs, 8 XLR outputs
- 4 XLR shared input/output in-house patching in DSOP corner
- 4 x XLR input + 16 x XLR output in-house patching in DSOP corner
- Additional looms available on request (subject to availability)

Speakers/Amplifiers

Speakers, at ½ & ¼ PAX.

- 3 x Quest HPI 110 FOH
- Rigged L/C/R, hung approximately 1m US of setting line.
- Audio feed is set: Matrix 1 & 2 to Left & Right speaker, L/R Mix to Center speaker

Speaker fill, Full & ¾ PAX.

- 2 x RCF 315
- (Rigged on stands in front of the DS legs, positioned to cover the first 3 or 4 rows)

Amplifiers

- 2 x QSC GX5 amps – FOH1 = L, 2 = C, 3 = R, 4 not used
- 1 x QSC GX7 amp – Subs Mono send linked over outputs

Processing/Effects

Console Allen & Heath QU16 Digital Console

- Onboard processing: Gate, HPF, PEQ (across all inputs and outputs), GEQ (across all outputs), compression Onboard effects: Reverb, Delay, ADT (Auto Double Tracking), Chorus, Symphonic Chorus, Flanger, Phaser, Gated Verb

External units

- Behringer Ultra-Graph Pro GEQ3102 Dual Channel 31 Band Digital Graphic EQ
- DBX 231S EQ Dual Channel 31 Band Graphic EQ

Playback

Digital

- Mac Mini with a Behringer sound card Running Full Qlab 4 License

Microphones & DI's

(All items listed below are shared between all gasworks venues. Items may be booked during your production meeting or by telephone or email before your event)

Vocal / Instrumental

- 2 x Shure Beta 58
- 1 x Shure Beta 57
- 4 x Shure SM 58
- 1 x Shure SM 57
- 2 x Sennheiser ew100 G3 Handheld Radio Mics (566 MHz – 608 MHz)
- 1 x Sennheiser ew100 G3 Headset RF Mic (17850 MHz – 1800 MHz)
- 4 x Sennheiser Lapel Mic

Please note it is illegal to broadcast within the 610 MHz – 652 MHz range

DI's

- 3 x Active Dual Behringer

Omni-direction

- 4 x Rode NT5

Lapel Microphones

- 3 x Sennheiser wireless XS 2 Microphone and Receiver

Other

- Multicore 16/4 analogue multicore (subject to availability)
- Microphone Stands 3 x Boom Stand
- 2 x Heavy-based upright stand
- Microphone Leads - Assorted

Lighting Equipment

Lighting Grid

The Gasworks Theatre lighting grid consists of 7 fixed Lateral Lighting bars (running the length of the theatre), 1 FOH Motorized Truss (FOH 2) running cross-stage, and 1 Fixed FOH (FOH 1) cross-stage bar.

Each Lateral Lighting Bar has 30 load circuits at 600mm centres. The FOH 1 Fixed Lighting Bar has 17 load circuits at 250mm centres. The FOH 2 Motorized Truss has 17 load circuits at 250mm centres.

Circuits distribution

- There are 44 floor circuits in the Theatre.
- There are 2 x 6 circuit patch bays located in the corners of the **STAGE (“Onstage”)**: DSOP, DSP, USOP, USP.
- There are a further 4 x 5 circuits found in the corners of the **ROOM (“Offstage”)**, inside a metal box.
- There is additional 3Phase power available for portable dimmer racks if required.

The total load capacity of the lighting grid is 1,600 kg. This load must not exceed 200kg to each nodal point of the truss.

A covered dip trap (cable duct) that is internally divided with separate provisions for audio, lighting control and power cables runs the perimeter of the theatre space.

Lighting Control

Control Console

- ETC Ion Console
Please confirm the software update and fixture library at the production meeting or via email.

Control Position

- The Bio Box is located above Theatre Soundlock, accessible via ladder. Any large or bulky equipment must be moved into Ops via either the seating bank or using the EWPs.

Wireless Riggers Remote

- Wireless Access Point: GasworksLX 2021 Password: gasworkslx ETC a RFR app or device not available through Gasworks and must be supplied by the hirer

Dimmers and Patching

Dimmers

- 5 x LSC ePAK 12 channel (60 channels x 2.4KVA)
- 1 x LSC GenVI 12 channel (12 channels x 2.4KVA)

The Patch bay and dimmers are located in a plant room adjacent to the dressing room. GenVI rack can be set to TruePower, creating either an Auto-on non-dimmed outlet or a DMX controllable non-dimmed outlet. Please talk with technical staff if you require this.

Load Circuits (Sub patches)

- Lateral Lighting Bars – 210 (1-210)
- FOH 1 Fixed Lighting Bar – 17 (231-248)
- FOH 2 Motorized Truss – 17 (249-266)
- “Onstage” Floor Circuits – 12 (267-278)
- “Offstage” Floor Circuits – 20 (211-230)

Additional Power

- Dimmer room 2 x Wilco 5 pin 30 amp 3 phase (subject to availability)

- Stage floor (Onstage MSP) 1 x Wilco 5 pin 30 amp 3 phase

Lanterns

Some of the lamps are part of the Standard Lighting Rig. Please review our lighting plan for numbers and positions. Any adjustments to Standard Lighting Plan need to be reset at bump out.

Profile

- 15 x ETC Source 4 Junior Zoom 25/50 575w
- 2 x ETC Source 4, 19 deg Fixed Beam Spot 750w
- 4 x Selecon Pacific 23/50 650w
- 3 x Selecon Acclaim Profile 24/44 650w
- 4 x Prolite Profile 25/45 1k (subject to availability)

Fresnel

- 20 x ETC Source 4 Fresnel 750w w/barndoors
- 4 x Strand Cantata Fresnel 1K w/barndoors

PC

- 8 x Cantata PC 1200w
- 4 x CCT PC 1000w

Cyc

- 10 x LED RGB Cyclorama units

LED

- 8 x LED Quad Pro Flat
- 18 x Tourpro Slimpar RGBAW+UV with 60 deg lenses
- 8 x Beamz BT F200C2 Fresnel 200Wts

Stands

- 6 x Steel, side boom bases (Subject to availability)
- 4 x Timber H-stands
- 4 x Steel barrel H-stands
- 12 x 90degree boom arms (varying lengths)
- Short scaff pipes and 90degree scaff clamps (subject to availability)

All lanterns are equipped with hook clamps, bolt sets, safety cables and colour

frames.

Unless noted, fresnels are equipped with barndoors.

Gobo Holders

Gobo holders are available for:

- Pacific profile spots.
- 8 Source 4 junior zooms (6 in use in standard plan).
- 2 Selecon Acclaim profiles
- 2 Prolite profiles

Additional lighting stock may be available at an additional cost

House/Work Lights

- 8 x LED pars, running through two dimmers and operated from lighting console.
- Motorized skylight shutters can be opened for additional daylight. Stutter must be opened at the end of the day.
- Fluorescent work lights powered from Dimmer Room through GPO. Must be left on when Theatrical lighting is not in use.

Rigging & Staging

Rigging Equipment

The venue has two circus rigging trusses:

- 300mm x 9000mm aluminium Box Truss above the stage at 2.5m from the back wall.
- 500mm x 9000mm aluminium Box Truss above the stage at 5.6m from the back wall.

The roof structure allows a generic Live Load of 1000kg to each main I-beam (EMRB) applied anywhere along the beam. The recommended Live load along the truss is 500kg.

There is an assortment of rigging gear, including slings, shackles, Scaff clamps, Scaff pipe, etc., available. Any rigging must be discussed prior to bump-in, and a qualified rigger must be employed to carry out the work where necessary.

A licensed rigger must install and sign off all rigging in the venue.

All rigging must be coordinated through and approved by the Gasworks Head Technician.

Stage Cloths

Drapes (black wool) 5.50m high x 2.50m long

(Note, the grid is at 6m. If drapes are to reach the floor, they must be hung from

perimeter curtain track, or from bars that need to be rigged at correct height and position for your specific production)

These leg drapes are used to create wings/legs and also the rear crossover. Drapes are in standard positions. Any adjustments to drapes from standard positions must be reset back to standard positions at bump out.

Cyclorama 8m x 12m (Calico)

Hung either against the rear wall or in front of the Upstage Smother.

US Smother 5.3m x 10m

Smother splits at the centre and can track offstage. Each side of the smother must be manually operated from stage level, from the centre (when opening)

Audio Visual Equipment

Gasworks can provide the following audio-visual equipment at an additional cost to the hirer:

Projector

Epson EB-G7905UNL 7000 ANSI Lumen projector
Connected via Blackmagic HDMI-SDI balun boxes with SDI cable

Media Players

- Sony DVP-NS50P DVD Player
- LG DZ111 DVD Player
- Mac Mini running Qlab 4 (see 3.5 Playback for more details. This is included in the hire and is not at additional cost)

All items listed below are shared between all Gasworks venues and must be booked prior to your event to ensure availability.

Screens

Flat portable tie-up screen.

- 3M x 1.8M. (Ties onto a bar. Has a pocket for a water pipe or batten pipe in the bottom. A small additional cost applies for this screen)

Sharks tooth screen

- 4.5M x 12M. Hung against the US Smother curtain giving crossover access behind it

Lectern

- 1 x free-standing gold & black lectern

Additional AV equipment may be sub-hired through Gasworks suppliers.

Working at Heights

EWP (Elevated Work Platform)

The theatre provides:

JLG elevated work platform.

- The 20MVL model has a 5.9m platform height, and point-and-go steering.

JLG Scissor lift Platform

- Height: 19 ft / 5.79 m.
- Platform Capacity: 606 lb / 274.88 kg
- Machine Width: 2 ft 8 in. / 0.81 m
- Drive Speed - Platform Lowered: 4 mph / 6.44 km/h

The policy at Gasworks is that operators of this EWP must either have an EWP operator's ticket or be supervised by someone who does.

Ladders

- Aluminium 'A' frame ladder (2.1m)
- Fibreglass 1.6M ladder

All ladder work over a height of 2m must be done with an approved harness as per Occupational Health & Safety Act 2004.

Testing & Tagging

All portable electrical equipment provided by the venue is tested and tagged according to AS/NZS3760 Australian Standard.

Any portable electrical equipment brought into the venue must be tested and tagged to this Australian Standard. Testing a small number of items may be done by the venue staff by prior arrangement and at a cost to the hirers.

Contact Information

Gasworks Arts Park
21 Graham St, Albert Park 3206
Admin 8606 4200
Website www.gasworks.org.au

Operations Manager – Eduard Ingles
8606 4200
eduard@gasworks.org.au

Head Technician – Jacob Shears
86064214
technical@gasworks.org.au

Loading Dock/Backstage
86064212

Gaswork Theatre Patch Sheet

Channel	Address	Dimmer	Patch	Lamp	Focus	Gel	Gobo	Notes
1	1	1	234	ETC Source 4	DS Face	r119		
2	2	2	240	ETC Source 4	DS Face	r119		
3	3	3	245	ETC Source 4	DS Face	r119		
4	4	4	70	ETC Source 4	MS Face	r119		
5	5	5	101	ETC Source 4	MS Face	r119		
6	6	6	132	ETC Source 4	MS Face	r119		
7	7	7	76	ETC Source 4	US Face	r119		
8	8	8	106	ETC Source 4	US Face	r119		
9	9	9	136	ETC Source 4	US Face	r119		
21	28	28	45	ETC Source 4 Frensel	O/W High Side			
22	29	29	166	ETC Source 4 Frensel	O/W High Side			
401	401-412	Gen V	47	Beamz LED Frensel	LED High Side			
402	413-424	Gen V	168	Beamz LED Frensel	LED High Side			
23	30	30	49	ETC Source 4 Frensel	O/W High Side			
24	31	31	169	ETC Source 4 Frensel	O/W High Side			
403	425-435	Gen V	51	Beamz LED Frensel	LED High Side			
404	436-448	Gen V	171	Beamz LED Frensel	LED High Side			
25	32	32	53	ETC Source 4 Frensel	O/W High Side			
26	33	33	173	ETC Source 4 Frensel	O/W High Side			
405	449-460	Gen V	54	Beamz LED Frensel	LED High Side			
406	461-472	Gen V	174	Beamz LED Frensel	LED High Side			
27	34	34	56	ETC Source 4 Frensel	O/W High Side			
28	35	35	176	ETC Source 4 Frensel	O/W High Side			
407	473-484	Gen V	57	Beamz LED Frensel	LED High Side			
408	485-417	Gen V	177	Beamz LED Frensel	LED High Side			
41	19	19	72	PAR 64	Face for spot 51			
42	20	20	102	PAR 64	Face for spot 52			
43	21	21	131	PAR 64	Face for spot 53			
44	22	22	74	PAR 64	Face for spot 54			
45	23	23	104	PAR 64	Face for spot 55			
46	24	24	134	PAR 64	Face for spot 56			
47	25	25	76	Acclaim 18-34 Degree	Face for spot 57			
48	26	26	106	Acclaim 18-34 Degree	Face for spot 58			
49	27	27	136	Acclaim 18-34 Degree	Face for spot 59			
51	10	10	136	ETC Source 4	DS OP Spot			
52	11	11	106	ETC Source 4	DS CS spot			
53	12	12	76	ETC Source 4	DS PS Spot			
54	13	13	81	ETC Source 4	MS OP Spot			
55	14	14	111	ETC Source 4	MS CS Spot			
56	15	15	141	ETC Source 4	MS PS Spot			
57	16	16	144	ETC Source 4	US OP Spot			
58	17	17	112	ETC Source 4	US CS Spot			
59	18	18	84	ETC Source 4	US PS Spot			

All Standard rig is on universe 1

Patch is Subject to change
3/08/2023- Version 1

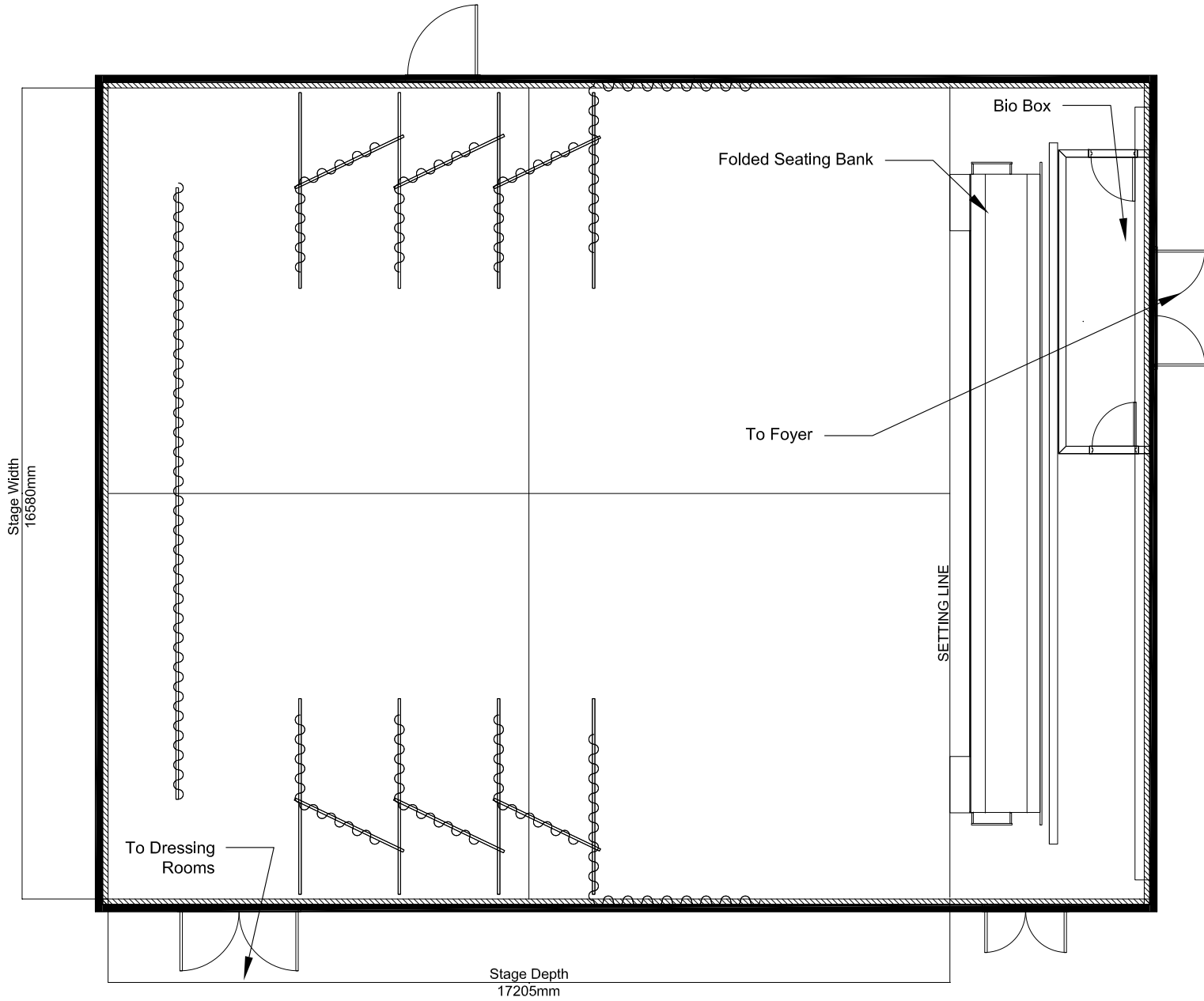
Gaswork Theatre Patch Sheet

Channel	Address	Dimmer	Patch	Lamp	Focus	Gel	Gobo	Notes
71	36	36	88	Selecon Pacific	Break up Gobo		Break up	
72	37	37	119	Selecon Pacific	Break up Gobo		Break up	
73	38	38	150	Selecon Pacific	Break up Gobo		Break up	
74	39	39	149	Selecon Pacific	Break up Gobo		Break up	
201	110-119	GPO	86	Tour Pro Slimpar 18	LED DS Wash			
202	120-129	GPO	111	Tour Pro Slimpar 18	LED DS Wash			
203	130-139	GPO	110	Tour Pro Slimpar 18	LED DS Wash			
204	140-149	GPO	110	Tour Pro Slimpar 18	LED DS Wash			
205	150-159	GPO	86	Tour Pro Slimpar 18	LED MS Wash			
206	160-169	GPO	116	Tour Pro Slimpar 18	LED MS Wash			
207	170-179	GPO	146	Tour Pro Slimpar 18	LED MS Wash			
208	180-189	GPO	146	Tour Pro Slimpar 18	LED MS Wash			
209	190-199	GPO	90	Tour Pro Slimpar 18	LED US Wash			
210	200-209	GPO	120	Tour Pro Slimpar 18	LED US Wash			
211	210-219	GPO	148	Tour Pro Slimpar 18	LED US Wash			
212	220-229	GPO	148	Tour Pro Slimpar 18	LED US Wash			
301	300-303	GPO	52	Quad Par LED	LED Cyc wash			4 channel mode IRGB
302	310-313	GPO	52	Quad Par LED	LED Cyc wash			4 channel mode IRGB
303	320-323	GPO	52	Quad Par LED	LED Cyc wash			4 channel mode IRGB
304	330-333	GPO	52	Quad Par LED	LED Cyc wash			4 channel mode IRGB
305	340-343	GPO	52	Quad Par LED	LED Cyc wash			4 channel mode IRGB
306	350-353	GPO	52	Quad Par LED	LED Cyc wash			4 channel mode IRGB
307	360-363	GPO	52	Quad Par LED	LED Cyc wash			4 channel mode IRGB
308	370-373	GPO	52	Quad Par LED	LED Cyc wash			4 channel mode IRGB
309	380-383	GPO	52	Quad Par LED	LED Cyc wash			4 channel mode IRGB
310	390-393	GPO	52	Quad Par LED	LED Cyc wash			4 channel mode IRGB
900	73+74	GPO	33+63+ 124+153 +41+71+ 131+164 +44+73+ 133+161	LED House Lights	LED House lights			
1000	2/511	N/A	N/A	Hazer	N/A			On Universe 2

All Standard rig is on universe 1

Patch is Subject to change

3/08/2023- Version 1



Notes:

- NOTES
- Approximated dimensions
 - Do not scale off this drawing
 - All dimensions are given in good faith and believed to be correct
 - if in doubt please review measurements on site

REV:	DESCRIPTION:	BY:	DATE:
STATUS:			

FOR INFORMATION



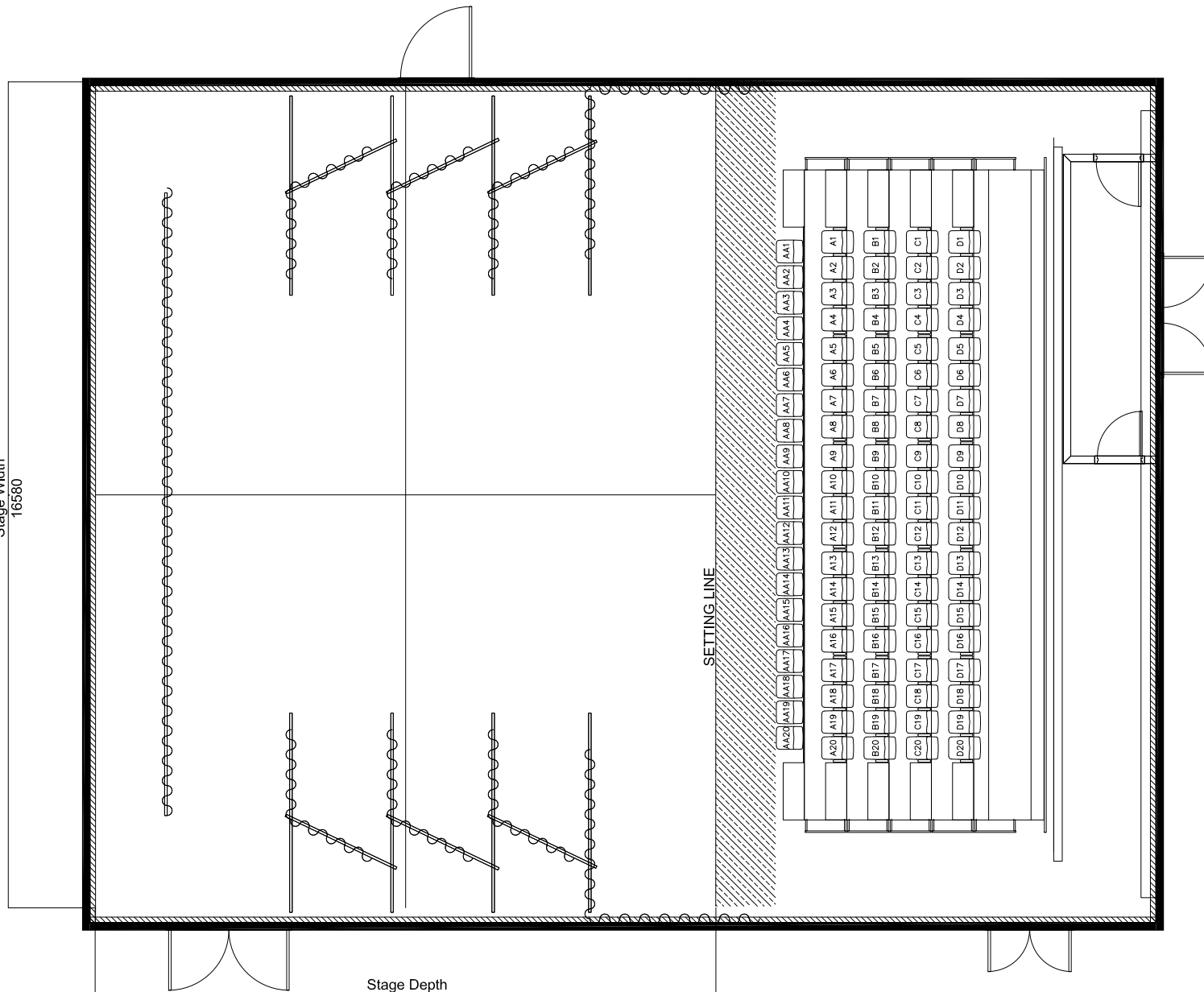
GASWORKS ARTS PARK
 21 Graham St
 Albert Park 3206
 03 8606 4209
 www.Gasworks.org.au

VENUE: **GASWORKS THEATRE**

TITLE: **SEATING 0 CONFIGURATION**

SCALE AT A3: 1:75 @ A4	DATE: 3/02/2023	DRAWN: E. Ingles	CHECKED:
PROJECT NO: 3202	DRAWING NO:	REVISION: A	

Stage Width
16580



Stage Depth
12450mm

Notes:

- NOTES
- Approximated dimensions
 - Do not scale off this drawing
 - All dimensions are given in good faith and believed to be correct
 - if in doubt please review measurements on site

REV:	DESCRIPTION:	BY:	DATE:
STATUS:			

FOR INFORMATION

GASWORKS ARTS PARK
 21 Graham St
 Albert Park 3206
 03 8606 4209
 www.Gasworks.org.au

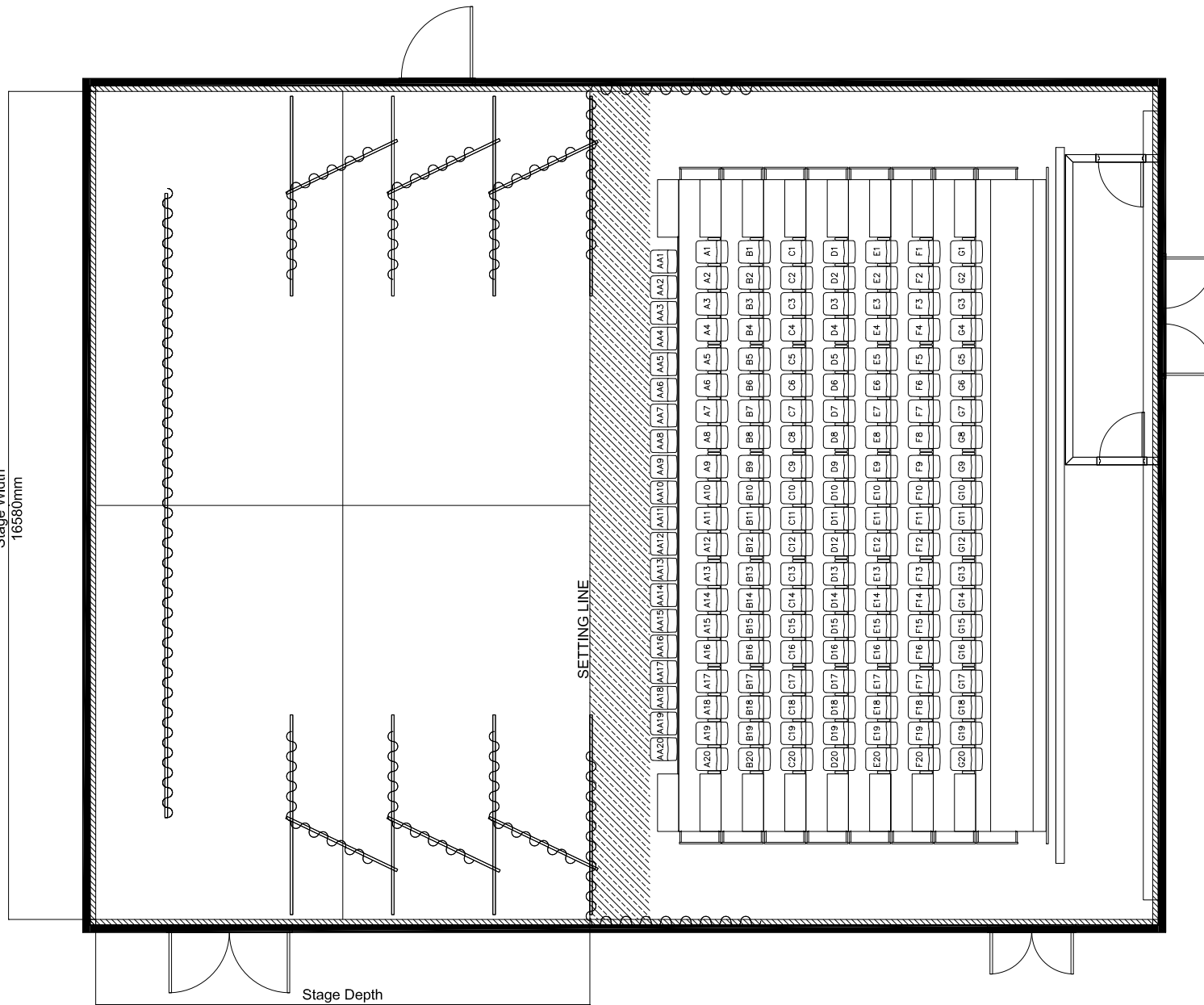
VENUE:
GASWORKS THEATRE

TITLE:
**SEATING 1/4 CONFIGURATION
 100 SEATS**

SCALE AT A3: 1:75 @ A4	DATE: 3/02/2023	DRAWN: E. Ingles	CHECKED:
PROJECT NO: 3202	DRAWING NO:	REVISION: A	

Stage Width
16580mm

Stage Depth
9000mm



Notes:

- NOTES
- Approximated dimensions
 - Do not scale off this drawing
 - All dimensions are given in good faith and believed to be correct
 - if in doubt please review measurements on site

REV: DESCRIPTION: BY: DATE:
STATUS:

FOR INFORMATION



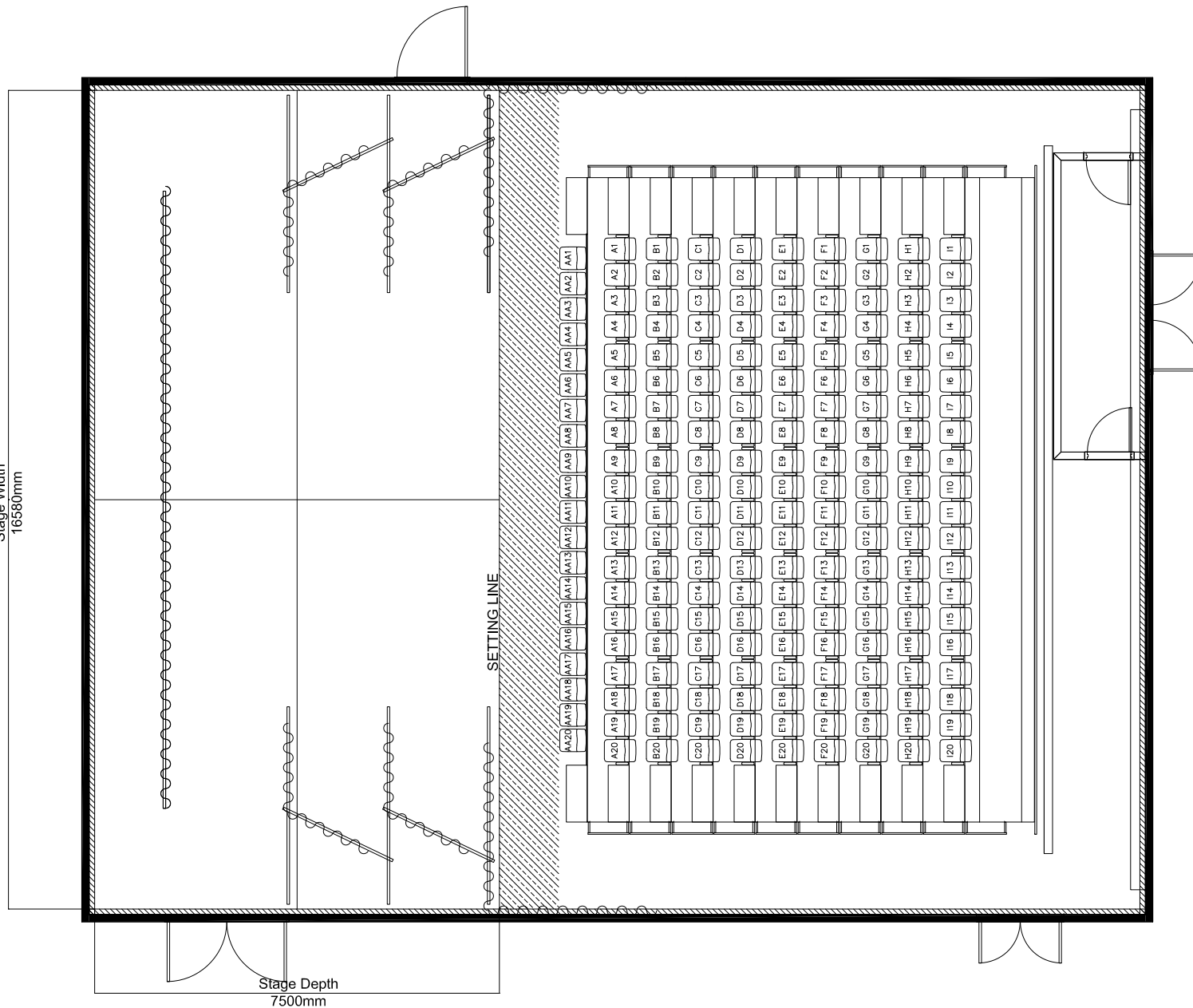
GASWORKS ARTS PARK
21 Graham St
Albert Park 3206
03 8606 4209
www.Gasworks.org.au

VENUE:
GASWORKS THEATRE

TITLE: **SEATING 1/2 CONFIGURATION
160 SEATS**

SCALE AT A3: 1:75 @ A4	DATE: 3/02/2023	DRAWN: E. Ingles	CHECKED:
PROJECT NO: 3202	DRAWING NO:	REVISION: A	

Stage Width
16580mm



Stage Depth
7500mm

Notes:

- NOTES
- Approximated dimensions
 - Do not scale off this drawing
 - All dimensions are given in good faith and believed to be correct
 - if in doubt please review measurements on site

REV: DESCRIPTION: BY: DATE:
STATUS:

FOR INFORMATION



GASWORKS ARTS PARK

21 Graham St
Albert Park 3206
03 8606 4209
www.Gasworks.org.au

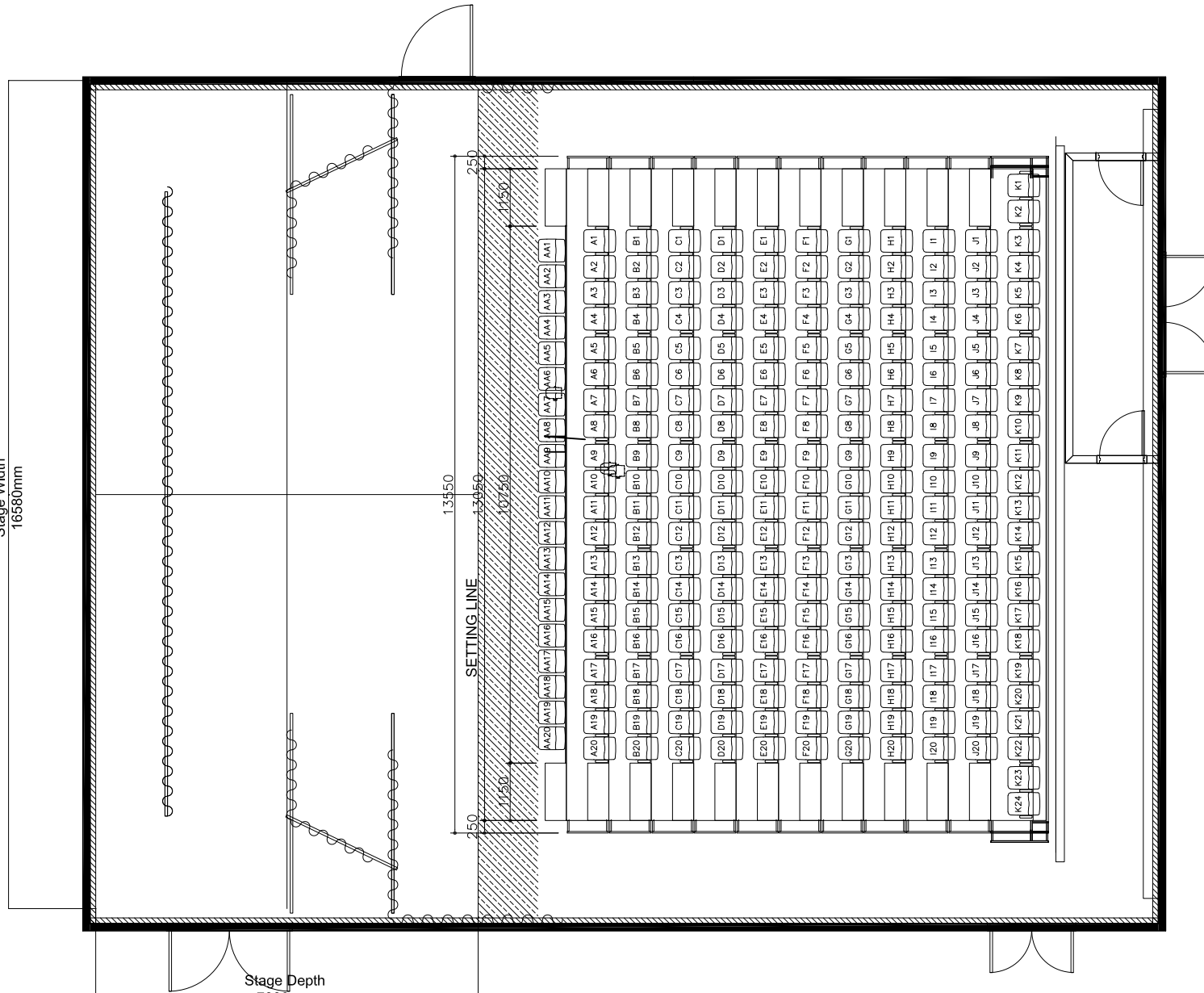
VENUE:
GASWORKS THEATRE

TITLE: SEATING 3/4 CONFIGURATION
200 SEATS

SCALE AT A3: 1:75 @ A4	DATE: 3/02/2023	DRAWN: E. Ingles	CHECKED:
PROJECT NO: 3202	DRAWING NO:	REVISION: A	

Stage Width
16580mm

Stage Depth
7000mm



Notes:

- NOTES
- Approximated dimensions
 - Do not scale off this drawing
 - All dimensions are given in good faith and believed to be correct
 - If in doubt please review measurements on site

REV: DESCRIPTION: BY: DATE:
STATUS:

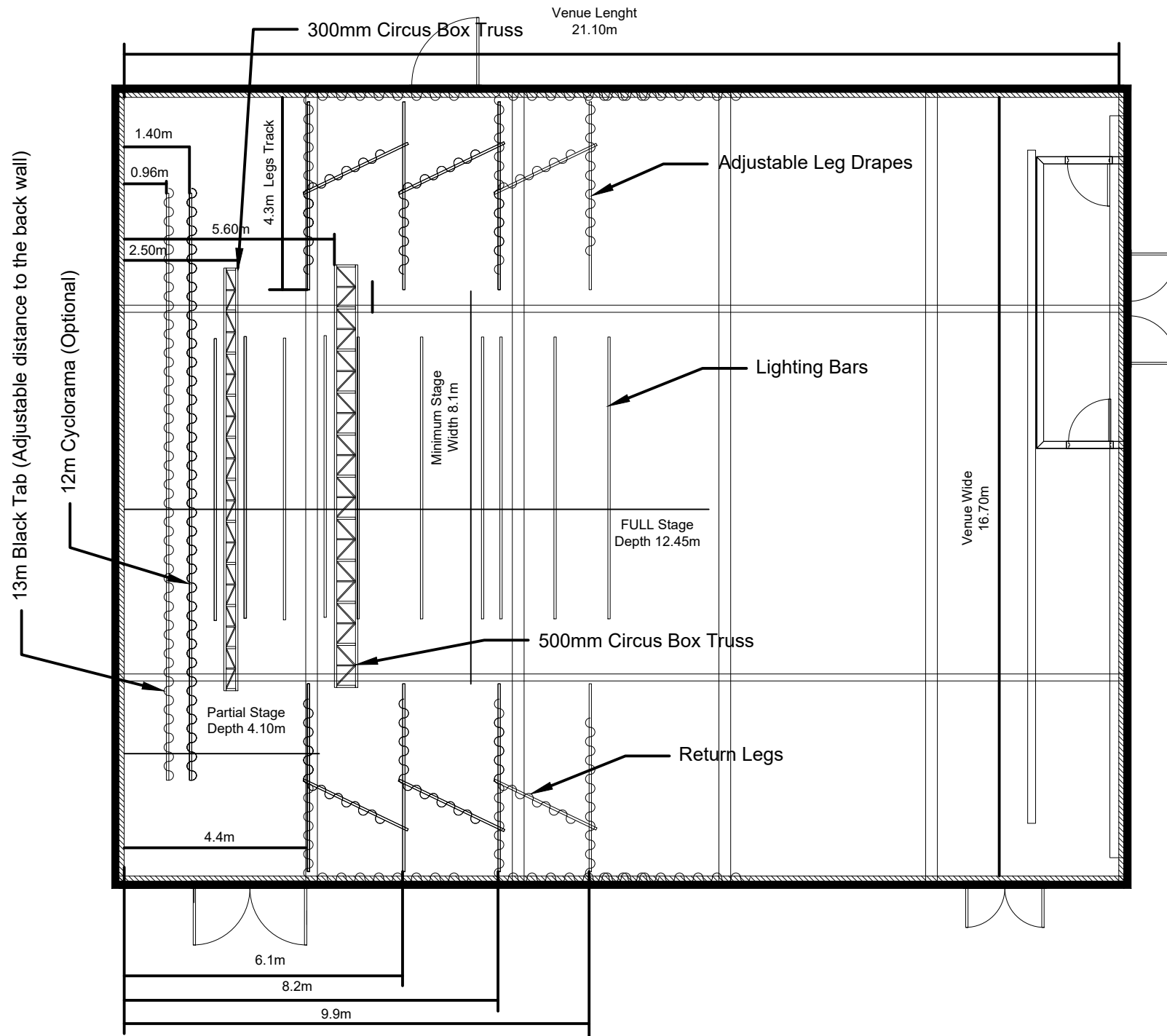
FOR INFORMATION

GASWORKS ARTS PARK
 21 Graham St
 Albert Park 3206
 03 8606 4209
 www.Gasworks.org.au

VENUE:
GASWORKS THEATRE

TITLE:
**SEATING FULL CAPACITY
 CONFIGURATION 244 SEATS**

SCALE AT A3: 1:75 @ A4	DATE: 3/02/2023	DRAWN: E. Ingles	CHECKED:
PROJECT NO: 3202	DRAWING NO:	REVISION: A	



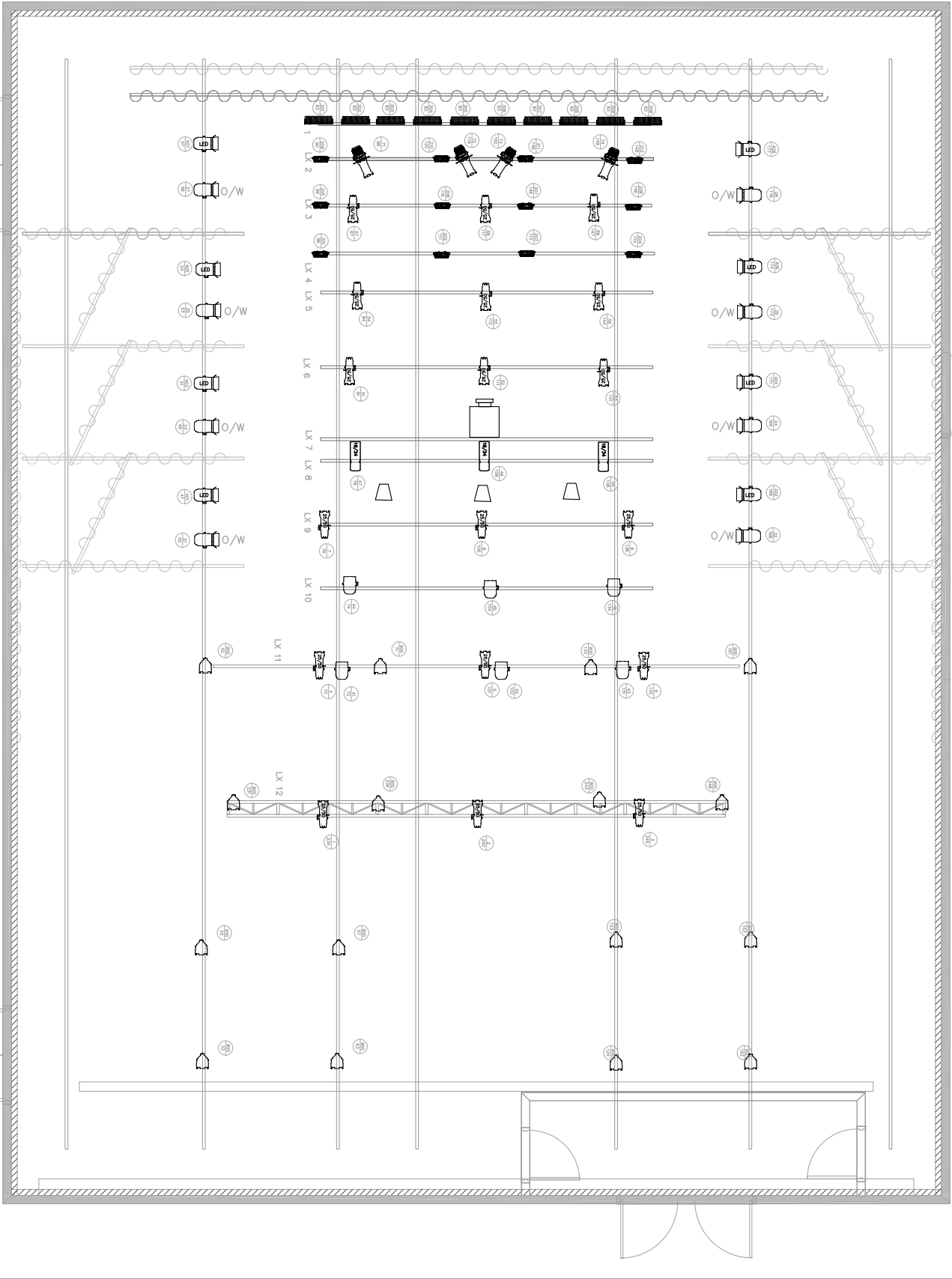
Notes:

1. THE COPYRIGHT OF THIS DRAWING IS VESTED IN Youspreadsheets AND IT MAY NOT BE REPRODUCED IN WHOLE OR PART OR USED FOR THE MANUFACTURE OF ANY ARTICLE WITHOUT THE EXPRESS PERMISSION OF THE COPYRIGHT HOLDERS.
2. WORK TO FIGURED DIMENSIONS ONLY.
3. THIS DRAWING IS TO BE READ IN CONJUNCTION WITH ALL RELEVANT ARCHITECT'S, SERVICE ENGINEER'S AND Youspreadsheets DRAWINGS AND SPECIFICATIONS.

REV:	DESCRIPTION:	BY:	DATE:
STATUS:			
FOR INFORMATION			

GASWORKS ARTS PARK
 21 Graham St
 Albert Park 3206
 03 8606 4209
 www.Gasworks.org.au

VENUE: Gasworks Theatre			
TITLE: Important Measurements			
SCALE AT AS:	DATE: 30/5/24	DRAWN: E. Ingles	CHECKED:
PROJECT NO:	DRAWING NO:	REVISION:	



NOTES:

- Approximated dimensions
- Do not scale off this drawing
- All dimensions are in millimeters unless good faith and believed to be correct
- If in doubt please review measurements on site

- Selecon Pacific 23/50 650w
- Source4 4x 25 40
- Zoomspot 500w Profile
- Source4 750w Fresnel
- PAR 64 Medium Lamp
- Source4 750w Fresnel
- Beamz BT F200C2 Fresnel RGBAW
- 1k Fresnel
- Slimpar LED RGBAW+UV
- 1k Ope units RGB
- LED PAR (House Lights)
- Epson EB-G7905UL 7000 ANSI Lumen
- Quest HPI 110 FWH
- Channel/Circuit

REV: DESCRIPTION: BR: DATE:

STATUS: FOR INFORMATION

FOR INFORMATION

GASWORKS ARTS PARK

21 Gatham St
 Albert Park 3206
 03 8500 4207
 www.gasworks.org.au

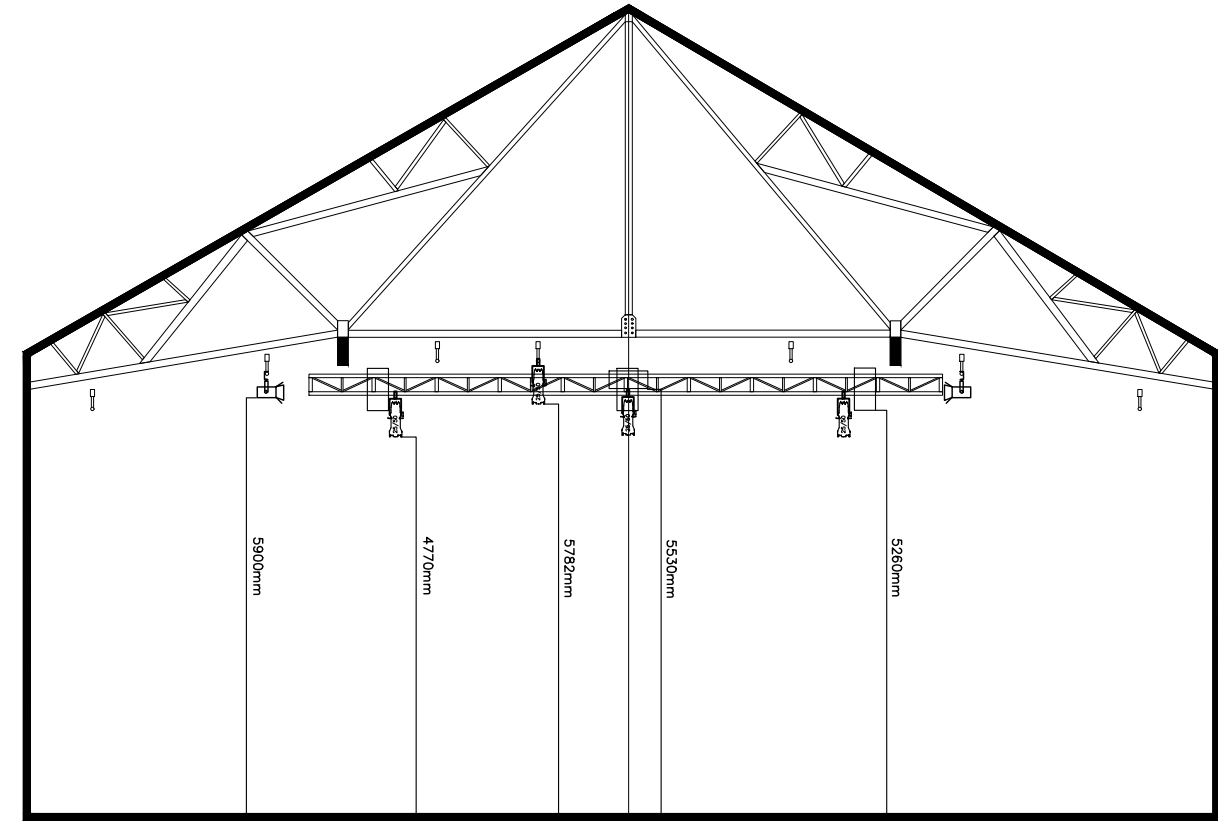
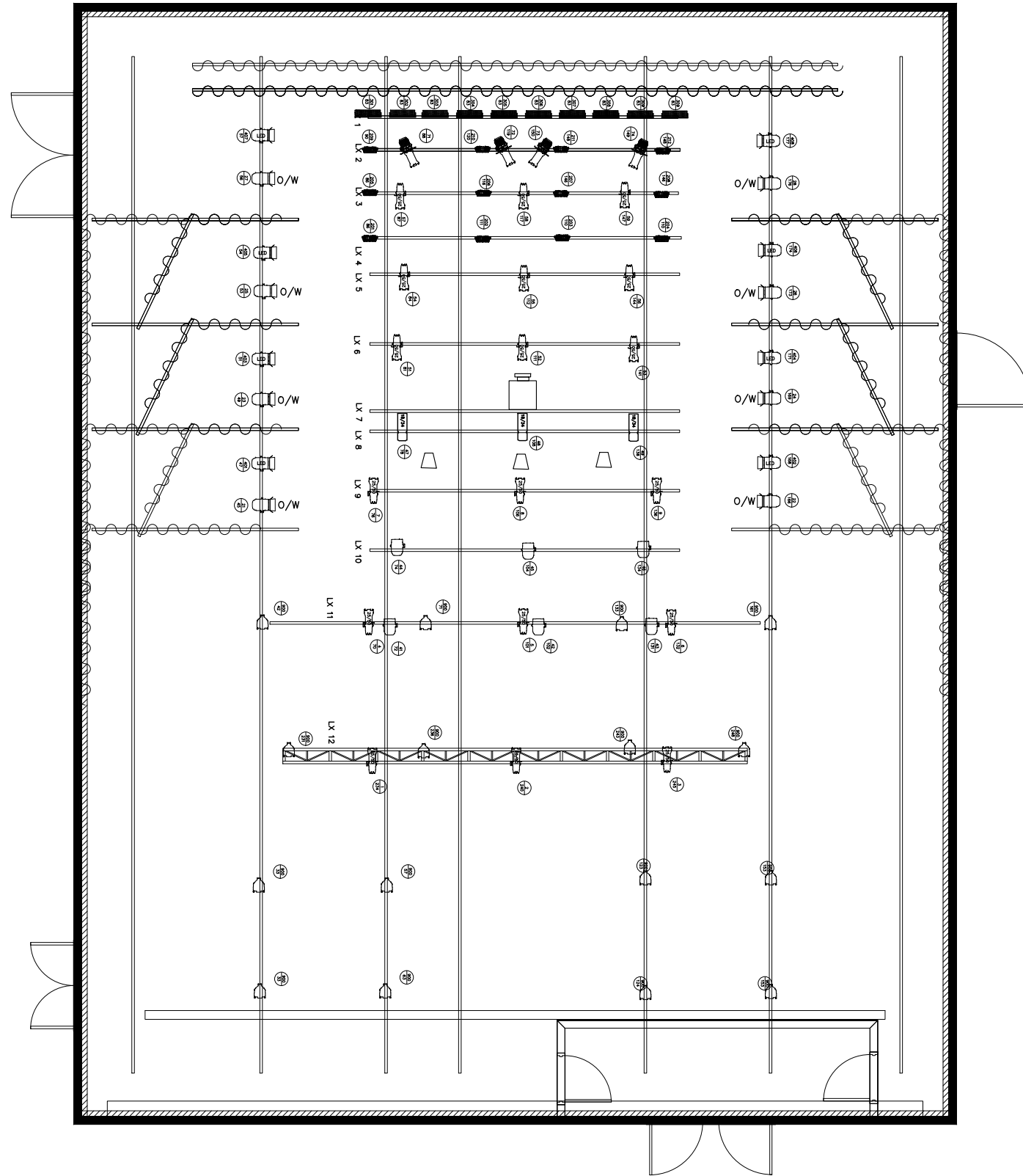
VAR: GASWORKS THEATRE

TITLE: LIGHTING STANDARD PLAN

SCALE AT AS: DATE: DRAWN: CHECKED:

NOT TO SCALE 12/2/2024 E. Ingles

PROJECT NO: DRAWING NO: REVISION: 5



- Selecon Pacific 23/50 650w
- Source4 Jrn 25-50 Zoomspot 500w Profile
- Source4 750w Fresnel
- PAR 64 Medium Lampl
- Source4 750w Fresnel
- Beamz BT F200C2 Fresnel RGBAW
- 1k Fresnel
- Slimpar LED RGBAW+UV
- 1k Cyc units RGB
- LED PAR (House Lights)
- Epson EB-G7905UNL 7000 ANSI Lumen
- Quest HPI 110 FOHI
- Channel/ Circuit

NOTES

- Approximated dimensions
- Do not scale off this drawing
- All dimensions are given in good faith and believed to be correct
- If in doubt please review measurements on site

REV. DESCRIPTION:	BY: DATE:
STATUS: FOR INFORMATION	

GASWORKS ARTS PARK

21 Graham St
Albert Park 3206
03 8606 4209
www.Gasworks.org.au

VENUE: GASWORKS THEATRE

TITLE:

SCALE AT AS: NOT TO SCALE	DATE: 12/2/2024	DRAWN: E. Ingles	CHECKED:
PROJECT NO: 2303	DRAWING NO:	REVISION:	C