

15 Aug
1 Sep
2024



BEING LIQUID

Matthew Lamb
Angela Roberts Bird Gallery



Gasworks Arts Park

BEING LIQUID

“Improvising the need to expand my humanist love of all things deeper than now.”

At the heart of my earliest ceramics practice was the need to learn the process of shaping in more detail. Building clay creatures grew into a passion to express my art in three dimensions. Using tools for my work helped articulate their finer details and expanded my technique and interest in the exquisite minutiae.

My studio became the most important space in my life as the space encourages me to be fluid with my art and my being.

-Matthew Lamb



Inanna
Ceramic, Metal Wire, Steel base
POA



004



Calliope
Ceramic, Metal Wire, Steel base
POA



Sekhmet
Ceramic, Metal Wire, Steel base
POA

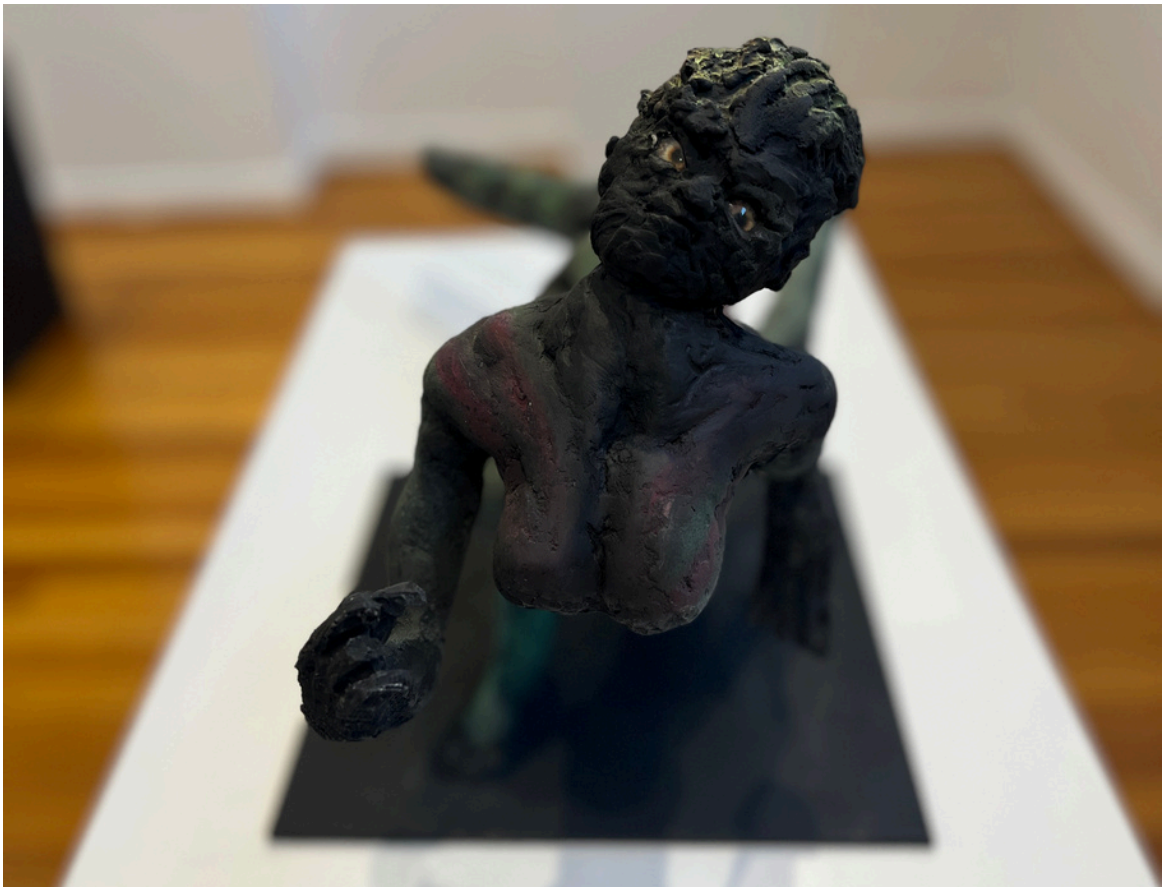


Tiamat
Ceramic, Metal Wire, Steel base
POA





Amaltheia
Ceramic, Metal Wire, Steel base
POA





Nyx
Ceramic, Metal Wire, Steel base
POA





Asteria
Ceramic, Metal Wire, Steel base
POA





Asteris
Cottone, 1998, 100 cm
Pb

015









THANK YOU FOR VIEWING

BEING LIQUID

By Matthew Lamb

For any purchase requests within the exhibition period please contact Gasworks Visual Art Manager: tracey@gasworks.org.au.

0018